

# Comparison between Rational Gegenbauer and Modified Generalized Laguerre Functions Collocation Methods for Solving the Case of Heat Transfer Equations Arising in Porous Medium

K. Parand <sup>a\*</sup>, F. Baharifard <sup>a</sup>, F. Bayat Babolghani <sup>a</sup>

(*a*) Department of Computer Sciences, Shahid Beheshti University, Tehran, Iran.

---

## Abstract

In this paper, we provide the collocation method for natural convection heat transfer equations embedded in porous medium which are of great importance in the design of canisters for nuclear waste disposal. This problem is a non-linear, three-point boundary value problem on semi-infinite interval. We use two orthogonal functions namely rational Gegenbauer and modified generalized Laguerre functions which are defined as basis functions in this approach and compare them together. We also present the comparison of these works with Runge-Kutta solution, moreover, in the graph of the  $\|Res\|^2$ , we show that the present solutions are accurate and applicable.

*Keywords* : Rational Gegenbauer; Modified generalized Laguerre; Collocation method; Nonlinear ODE; Indirect multiquadric; Porous media.

---

## 1 Introduction

### 1.1 Introducing of the problem

Natural convective heat transfer in porous media has received considerable attention during the past few decades. This interest can be attributed to its wide range of applications in ceramic processing, nuclear reactor cooling system, crude oil drilling, chemical reactor design, ground water pollution and filtration processes. External natural convection in a porous medium adjacent to heated bodies was analyzed by Nield and Bejan [39], Merkin [33, 34], Minkowycz and Cheng [35, 36, 37], Pop and Cheng [12, 47], Ingham and Pop [29]. All through these studies, it is assumed that the boundary layer approximations are applicable and the coupled set of governing equations are solved by numerical methods. Also, [1, 51] worked out this problem. Parand [40] Compared two common collocation approaches based on radial basis functions for the case of heat transfer equations arising in porous medium.

In present study, we consider the problem of natural convection about an inverted heated cone

---

\*Corresponding author. Email address: [k.parand@sbu.ac.ir](mailto:k.parand@sbu.ac.ir)

embedded in a porous medium of infinite extent. No similarity solution exists for the truncated cone, but for the case of full cone similarity solutions exist if the prescribed wall temperature or surface heat flux is a power function of distance from the vertex of the inverted cone [12, 39, 54, 55]. Bejan and Khair [3] used Darcy's law to study the vertical natural convective flows driven by temperature and concentration gradients. Nakayama and Hossain [38] applied the integral method to obtain the heat and mass transfer by free convection from a vertical surface with constant wall temperature and concentration. Yih [60] examined the coupled heat and mass transfer by free convection over a truncated cone in porous media for variable wall temperature and variable heat and mass fluxes, Also he [61] applied the uniform transpiration effect on coupled heat and mass transfer in mixed convection about inclined surfaces in porous media for the entire regime. Cheng [10] used an integral approach to study the heat and mass transfer by natural convection from truncated cones in porous media with variable wall temperature and [11] studies the Soret and Dufour effects on the boundary layer flow due to natural convection heat and mass transfer over a vertical cone in a porous medium, saturated with Newtonian fluids with constant wall temperature. Natural convective mass transfer from upward-pointing vertical cones, embedded in saturated porous media, was studied using the limiting diffusion [50]. The natural convection along with an isothermal wavy cone embedded in a fluid-saturated porous medium were presented in [48, 49]. In [54, 55] fluid flow and heat transfer of vertical full cone embedded in porous media were solved by Homotopy analysis method.

If we want to express the problem formulation of this model, we can consider an inverted cone with semi-angle  $\gamma$  and take axes in the manner indicated in Fig. 1 (a). The boundary layer develops over the heated frustum  $x = x_0$ . In terms of the stream function  $\psi$  is defined by:

$$u = \frac{1}{r} \frac{\partial \psi}{\partial y}, \quad v = -\frac{1}{r} \frac{\partial \psi}{\partial x}. \quad (1.1)$$

The boundary layer equations for natural convection of Darcian fluid about a cone are:

$$\frac{\partial}{\partial x}(ru) + \frac{\partial}{\partial y}(rv) = 0 \quad (1.2)$$

$$u = \frac{\rho_{\infty} \beta K g \cos \gamma (T - T_{\infty})}{\mu} \quad (1.3)$$

$$\frac{1}{r} \left( \frac{\partial \psi}{\partial y} \frac{\partial T}{\partial x} - \frac{\partial \psi}{\partial x} \frac{\partial T}{\partial y} \right) = \alpha \frac{\partial^2 T}{\partial y^2}. \quad (1.4)$$

For a thin boundary layer,  $r$  is obtained approximately  $x \sin(\gamma)$ . Suppose that a power law of heat flux is prescribed on the frustum. Accordingly, the boundary conditions at infinity are:

$$u = 0, \quad T = T_{\infty}, \quad y \rightarrow \infty, \quad (1.5)$$

and at the wall are

$$v = 0, \quad y = 0. \quad (1.6)$$

The surface heat flux  $q_w$  is prescribed by

$$q_w = -k \left( \frac{\partial T}{\partial y} \right)_{y=0} = A(x - x_0)^{\lambda} \quad x_0 \leq x < \infty. \quad (1.7)$$

For the case of a full cone ( $x_0 = 0$ , Fig.1(b)) a similarity solution exists. In the case of prescribed surface heat flux, we let:

$$\begin{aligned} \psi &= \alpha r (Ra_x)^{1/3} f(\eta), \\ T - T_{\infty} &= \frac{q_w x}{k} (Ra_x)^{-1/3} \theta(\eta), \\ \eta &= \frac{y}{x} (Ra_x)^{1/3}, \end{aligned} \quad (1.8)$$

where

$$Ra_x = \frac{\rho_\infty \beta g K \cos(\gamma) q_w x^2}{\mu \alpha k}, \tag{1.9}$$

is the local Rayleigh number for the case of prescribed surface heat flux. The governing equations become

$$\begin{aligned} f' &= \theta \\ \theta'' + \frac{\lambda + 5}{2} f \theta' - \frac{2\lambda + 1}{3} f' \theta &= 0. \end{aligned} \tag{1.10}$$

Subjected to boundary conditions as:

$$f(0) = 0, \quad \theta'(0) = -1, \quad \theta(\infty) = 0. \tag{1.11}$$

Finally from Equations (1.10) and (1.11) we have:

$$\begin{cases} ODE. & f''' + \left(\frac{\lambda+5}{2}\right) f f'' - \left(\frac{2\lambda+1}{3}\right) (f')^2 = 0, \\ B.C. & f(0) = 0, \quad f''(0) = -1, \quad f'(\infty) = 0. \end{cases} \tag{1.12}$$

It is of interest to obtain the value of the local Nusselt number which is defined as:

$$Nu_x = \frac{q_w x}{k(T_w - T_\infty)}. \tag{1.13}$$

From Eqs. (1.13), (1.8) and (1.9) it follows that the local Nusselt number which is of interest to obtain given by:

$$Nu_x = Ra_x^{1/3} [-\theta(0)]. \tag{1.14}$$

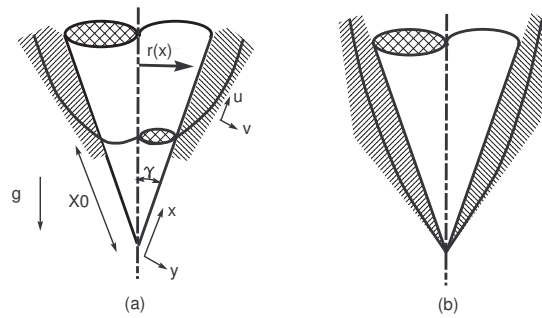


Fig. 1. (a) Coordinate system for the boundary layer on a heated frustum of a cone, (b) full cone,  $x_0 = 0$ .

### 1.2 Spectral method

Many of the current science and engineering problems are set in unbounded domains. In the context of spectral methods such as collocation and Galerkin methods [31], a number of approaches for treating unbounded domains have been proposed and investigated. The most common method is the use of polynomials that are orthogonal over unbounded domains, such as the Hermite and Laguerre spectral method [14, 15, 16, 19, 24, 32, 52, 53].

Guo [20, 21, 22, 23] proposed a method that proceeds by mapping the original problem in an unbounded domain to a problem in a bounded domain, and then using suitable Jacobi polynomials such as Gegenbauer polynomials to approximate the resulting problems. The Jacobi polynomials are a class of classical orthogonal polynomials and the Gegenbauer polynomials, thus the Legendre

and Chebyshev polynomials, are special cases of these polynomials also which have been used in several literatures for solving some problems [2, 30].

One more approach is replacing infinite domain with  $[-L, L]$  and semi-infinite interval with  $[0, L]$  by choosing  $L$ , sufficiently large. This method is named domain truncation [4].

There is another effective direct approach for solving such problems which is based on rational approximations. Christov [13] and Boyd [5, 6] developed some spectral methods on unbounded intervals by using mutually orthogonal systems of rational functions. Boyd [5] defined a new spectral basis, named rational Chebyshev functions on the semi-infinite interval, by mapping to the Chebyshev polynomials. Guo et al. [25] introduced a new set of rational Legendre functions which are mutually orthogonal in  $L^2(0, \infty)$ . They applied a spectral scheme using the rational Legendre functions for solving the Korteweg-de Vries equation on the half-line. Boyd et al. [8] applied pseudospectral methods on a semi-infinite interval and compared rational Chebyshev, Laguerre and mapped Fourier sine methods.

Parand et al. [41, 42, 43, 44, 45, 46], applied spectral method to solve nonlinear ordinary differential equations on semi-infinite intervals. Their approach was based on rational tau and collocation methods.

In this paper, solve the model Eq. (1.12) numerically by using two orthogonal functions, namely rational Gegenbauer functions and modified generalized Laguerre functions in collocation method and compare our the obtained results. we also have a comparison with solutions of [55].

Sections 2 and 3 review the desirable properties of rational Gegenbauer functions and modified generalized Laguerre functions with solution of the problem with collocation method by these functions, respectively. In Section 4 we show our results via tables and figures. Finally, concluding remarks are presented in Section 5.

## 2 Rational Gegenbauer functions

In this section, firstly, rational Gegenbauer functions are introduced and some basic properties of them are presented. Then we approximate a function using Gauss integration with rational Gegenbauer-Gauss points.

The Gegenbauer polynomials  $G_n^\alpha(y)$  of order  $\alpha$  and of degree  $n$  are defined as follows [56, 57]:

$$G_n^\alpha(y) = \sum_{j=0}^{\lfloor n/2 \rfloor} (-1)^j \frac{\Gamma(n + \alpha - j)}{j!(n - 2j)!\Gamma(\alpha)} (2y)^{n-2j}, \quad (2.15)$$

where  $n$  is an integer,  $\alpha$  is a real number greater than  $-\frac{1}{2}$  and  $\Gamma$  is the Gamma function.

The Gegenbauer polynomials are orthogonal in the interval  $[-1, 1]$  with respect to the weight function  $\rho(y) = (1 - y^2)^{\alpha - \frac{1}{2}}$  where  $\alpha > -\frac{1}{2}$ .

The new basis functions, is denoted by  $RG_n^\alpha(x) = G_n^\alpha(y)$ , where  $L$  is a constant parameter and  $y = \frac{x-L}{x+L}$ ,  $y \in [-1, 1]$ , the constant parameter  $L$  sets the length scale of the mapping . Boyd [7] offered guideline for optimizing the map parameter  $L$ .

$RG_n^\alpha(x)$  is the  $n$ th eigenfunction of the singular Sturm-Liouville problem:

$$\begin{aligned} (x+L) \frac{\sqrt{x}}{L} \frac{d}{dx} \left[ (x+L) \sqrt{x} \frac{d}{dx} RG_n^\alpha(x) \right] + \alpha \left( \frac{x^2 - L^2}{L} \right) \frac{d}{dx} RG_n^\alpha(x) \\ + n(n+2\alpha) RG_n^\alpha(x) = 0, \end{aligned} \quad (2.16)$$

and satisfies in the following recurrence relation:

$$\begin{aligned}
 RG_0^\alpha(x) &= 1, & RG_1^\alpha(x) &= 2\alpha \frac{x-L}{x+L}, \\
 RG_{n+1}^\alpha(x) &= \frac{1}{n+1} \left[ 2 \left( \frac{x-L}{x+L} \right) (n+\alpha) RG_n^\alpha(x) - (n+2\alpha-1) RG_{n-1}^\alpha(x) \right], \quad n \geq 1.
 \end{aligned}
 \tag{2.17}$$

The special cases of rational Gegenbauer functions are rational Legendre functions and rational Chebyshev functions, that were introduced by Guo [25, 26].

### 2.1 Function approximation with rational Gegenbauer functions

We determine  $w(x) = \frac{2L}{(x+L)^2} \left[ 1 - \left( \frac{x-L}{x+L} \right)^2 \right]^{\alpha-\frac{1}{2}}$  as a non-negative, integrable and real-valued weight function for rational Gegenbauer over the interval  $I = [0, \infty)$ .

Let us denote

$$\rho(y) = (1-y^2)^{\alpha-\frac{1}{2}}, \quad y = \frac{x-L}{x+L},
 \tag{2.18}$$

hence we have

$$\frac{dy}{dx} = \frac{2L}{(x+L)^2}, \quad \frac{dx}{dy} = \frac{2L}{(y-1)^2}, \quad w(x) \frac{dx}{dy} = \rho(y).
 \tag{2.19}$$

Now we define

$$L_w^2(I) = \{v : I \rightarrow R \mid v \text{ is measurable and } \|v\|_w < \infty\},
 \tag{2.20}$$

where

$$\|v\|_w = \left( \int_0^\infty |v(x)|^2 w(x) dx \right)^{\frac{1}{2}},
 \tag{2.21}$$

is the norm induced by the scalar product

$$\langle u, v \rangle_w = \int_0^\infty u(x)v(x)w(x)dx.
 \tag{2.22}$$

Thus  $\{RG_n^\alpha(x)\}_{n \geq 0}$  denotes a system which is mutually orthogonal under Eq.(2.22), i.e.,

$$\langle RG_n^\alpha, RG_m^\alpha \rangle_w = \frac{\pi 2^{1-2\alpha} \Gamma(n+2\alpha)}{n!(n+\alpha)[\Gamma(\alpha)]^2} \delta_{nm},
 \tag{2.23}$$

where  $\delta_{nm}$  is the Kronecker delta function. This system is complete in  $L_w^2(I)$ . For any function  $u \in L_w^2(I)$  the following expansion holds

$$u(x) = \sum_{k=0}^\infty a_k RG_k^\alpha(x),
 \tag{2.24}$$

with

$$a_k = \frac{\langle u, RG_k^\alpha \rangle_w}{\|RG_k^\alpha\|_w^2}.
 \tag{2.25}$$

The  $a_k$ 's are the expansion coefficients associated with the family  $\{RG_k^\alpha(x)\}$ .

## 2.2 Rational Gegenbauer interpolation approximation

Authors of [9, 18] introduced Gauss integration. Later, Guo introduced rational Legendre-Gauss points [25] and rational Chebyshev-Gauss points [26]. Now we want to define rational Gegenbauer-Gauss interpolation. Let

$$\mathcal{RG}_N^\alpha = \text{span}\{RG_0^\alpha, RG_1^\alpha, \dots, RG_N^\alpha\}, \quad (2.26)$$

and  $y_j, j = 0, 1, \dots, N$ , be the  $N + 1$  roots of the polynomial  $G_{N+1}^\alpha(y)$ . These points are known as Gegenbauer-Gauss points. The corresponding Christoffel numbers of them are [57]:

$$\frac{2^{2-2\alpha}\pi\Gamma(N+1+2\alpha)}{(N+1)!\Gamma^2(\alpha)} \times \frac{1}{(1-y_j^2)\left[\frac{d}{dy}G_{N+1}^\alpha(y_j)\right]^2}. \quad (2.27)$$

We define

$$x_j = L \frac{1+y_j}{1-y_j} \quad j = 0, 1, \dots, N, \quad (2.28)$$

which are called as rational Gegenbauer-Gauss nodes. In fact, these points are zeros of the function  $RG_{N+1}^\alpha(x)$ . Using Gauss integration we have:

$$\begin{aligned} \int_0^\infty u(x)w(x)dx &= \int_{-1}^1 u\left(L\frac{1+y}{1-y}\right)\rho(y)dy \\ &= \sum_{j=0}^N u(x_j)w_j \quad \forall u \in \mathcal{RG}_{2N}^\alpha, \end{aligned} \quad (2.29)$$

where

$$w_j = \frac{2^{2-2\alpha}\pi\Gamma(N+1+2\alpha)}{(N+1)!\Gamma^2(\alpha)} \times \frac{L}{x_j(x_j+L)^2\left[\frac{d}{dx}RG_{N+1}^\alpha(x_j)\right]^2}, \quad (2.30)$$

are the corresponding weights with the  $N + 1$  rational Gegenbauer-Gauss nodes, that can be obtained from Eqs. (2.27) and (2.28).

The interpolating function of a smooth function  $u$  on a semi-infinite interval is denoted by  $P_N u$ . It is an element of  $\mathcal{RG}_N^\alpha$  and is defined as

$$P_N u(x) = \sum_{k=0}^N a_k RG_k^\alpha(x). \quad (2.31)$$

$P_N u$  is the orthogonal projection of  $u$  upon  $\mathcal{RG}_N^\alpha$  with respect to the inner product Eq.(2.22) and the norm Eq.(2.21). Thus by the orthogonality of rational Gegenbauer functions, we have [20]

$$\langle P_N u - u, RG_i^\alpha \rangle_w = 0 \quad \forall RG_i^\alpha \in \mathcal{RG}_N^\alpha. \quad (2.32)$$

To apply a collocation method, we consider the residual  $Res(x)$ , when the expansion is substituted into the governing equation. The  $a_k$ 's have to be selected so that the boundary conditions are satisfied, but the residual zero is made at as many (suitable chosen) spatial points as possible.

## 2.3 Solving the problem with rational Gegenbauer functions

In this part, we use rational Gegenbauer collocation (RGC) method by applying  $P_N$  operator on the function  $f(\eta)$  under Eq. (2.31). Then, we construct the residual function by substituting  $f(\eta)$

by  $P_N f(\eta)$  in the model Eq. (1.12). By equalizing  $Res(\eta)$  to zero at rational Gegenbauer-Gauss points  $(\eta_j, j = 1, 2, \dots, N - 1)$  plus two boundary conditions, we can find the coefficients  $a_k$ :

$$\begin{aligned}
 Res(\eta) &= \frac{d^3}{d\eta^3} P_N f(\eta) + \left(\frac{\lambda + 5}{2}\right) P_N f(\eta) \left(\frac{d^2}{d\eta^2} P_N f(\eta)\right) \\
 &\quad - \left(\frac{2\lambda + 1}{3}\right) \left(\frac{d}{d\eta} I_N f(\eta)\right)^2, \\
 P_N f(0) &= 0, \\
 \frac{d^2}{d^2\eta} P_N f(0) &= -1.
 \end{aligned}
 \tag{2.33}$$

We note that the third boundary condition is already satisfied. These  $N + 1$  equations generate a set of  $N + 1$  nonlinear equations which can be solved by a well-known method such as the Newton method.

### 3 Modified generalized Laguerre functions

This section is devoted to the introduction of the basic notions and working tools concerning orthogonal modified generalized Laguerre. It has been widely used for numerical solutions of differential equations on infinite intervals.  $L_n^\alpha(x)$  (generalized Laguerre polynomial) is the  $n$ th eigenfunction of the Sturm-Liouville problem [14, 27, 46]:

$$\begin{aligned}
 x \frac{d^2}{dx^2} L_n^\alpha(x) + (\alpha + 1 - x) \frac{d}{dx} L_n^\alpha(x) + n L_n^\alpha(x) &= 0, \\
 x \in I = [0, \infty), \quad n = 0, 1, 2, \dots
 \end{aligned}
 \tag{3.34}$$

The generalized Laguerre in polynomial manner is defined applying the following recurrence formula:

$$\begin{aligned}
 L_0^\alpha(x) &= 1, \\
 L_1^\alpha(x) &= 1 + \alpha - x, \\
 n L_n^\alpha(x) &= (2n - 1 + \alpha - x) L_{n-1}^\alpha(x) - (n + \alpha - 1) L_{n-2}^\alpha(x).
 \end{aligned}
 \tag{3.35}$$

These are orthogonal polynomials for the weight function  $w_\alpha = x^\alpha e^{-x}$ . We define Modified generalized Laguerre functions (which we denote MGLF)  $\phi_j$  as follows [46]:

$$\phi_j(x) = \exp\left(\frac{-x}{2L}\right) L_j^1\left(\frac{x}{L}\right), \quad L > 0.
 \tag{3.36}$$

This system is an orthogonal basis [17, 58] with weight function  $w(x) = \frac{x}{L}$  and orthogonality property [46]:

$$\langle \phi_m, \phi_n \rangle_{w_L} = \left(\frac{\Gamma(n + 2)}{L^2 n!}\right) \delta_{nm},
 \tag{3.37}$$

where  $\delta_{nm}$  is the Kronecker function.

#### 3.1 Function approximation with Laguerre functions

A function  $f(x)$  defined over the interval  $I = [0, \infty)$  can be expanded as

$$f(x) = \sum_{i=0}^{\infty} a_i \phi_i(x),
 \tag{3.38}$$

where

$$a_i = \frac{\langle f, \phi_i \rangle_w}{\langle \phi_i, \phi_i \rangle_w}. \quad (3.39)$$

If the infinite series in Eq. (3.38) is truncated with  $N$  terms, then it can be written as [46]

$$f(x) \simeq \sum_{i=0}^{N-1} a_i \phi_i(x) = A^T \phi(x), \quad (3.40)$$

with

$$A = [a_0, a_1, a_2, \dots, a_{N-1}]^T, \quad (3.41)$$

$$\phi(x) = [\phi_0(x), \phi_1(x), \dots, \phi_{N-1}(x)]^T. \quad (3.42)$$

### 3.2 Modified generalized Laguerre functions collocation method

Laguerre-Gauss-Radau points and generalized Laguerre-Gauss-type interpolation were introduced by [28, 46, 59, 62].

Let

$$\mathfrak{R}_N = \text{span}\{1, x, \dots, x^{2N-1}\}, \quad (3.43)$$

we choose the collocation points relative to the zeroes of the functions [46]

$$p_j(x) = \phi_j(x) - \left(\frac{j+1}{j}\right)\phi_{j-1}(x). \quad (3.44)$$

Let  $w(x) = \frac{x}{L}$  and  $x_j, j = 0, 1, \dots, N-1$ , be the  $N$  MGLF-Radau points. The relation between MGLF orthogonal systems and MGLF integrations is as follows [46, 57]:

$$\int_0^\infty f(x)w(x)dx = \sum_{j=0}^{N-1} f_j(x)w_j + \left(\frac{\Gamma(N+2)}{(N)!(2N)!}\right)f^{2N}(\xi)e^\xi, \quad (3.45)$$

where  $0 < \xi < \infty$  and  $w_j = x_j \frac{\Gamma(N+2)}{(L(N+1))![(N+1)\phi_{N+1}(x_j)]^2}$ ,  $j = 0, 1, 2, \dots, N-1$ . In particular, the second term on the right-hand side vanishes when  $f(x)$  is a polynomial of degree at most  $2N-1$  [46]. We define

$$I_N u(x) = \sum_{j=0}^{N-1} a_j \phi_j(x), \quad (3.46)$$

it as:  $I_N u(x_j) = u(x_j)$ ,  $j = 0, 1, 2, \dots, N-1$ .  $I_N u$  is the orthogonal projection of  $u$  upon  $\mathfrak{R}_N$  with respect to the discrete inner product and discrete norm as [46]:

$$\langle u, v \rangle_{w,N} = \sum_{j=0}^{N-1} u(x_j)v(x_j)w_j, \quad (3.47)$$

$$\|u\|_{w,N} = \langle u, u \rangle_{w,N}^{\frac{1}{2}}, \quad (3.48)$$

thus for the MGLF Gauss-Radau interpolation we have

$$\langle I_N u, v \rangle_{w,N} = \langle u, v \rangle_{w,N}, \quad \forall u, v \in \mathfrak{R}_N. \quad (3.49)$$



### 3.3 Solving the problem with modified generalized Laguerre functions

To apply modified generalized Laguerre collocation method to Eq. (1.12), first we expand  $f(\eta)$  as follows:

$$I_N f(\eta) = \sum_{j=0}^{N-1} a_j \phi_j(\eta), \tag{3.50}$$

to find the unknown coefficients  $a_j$ 's, we substitute the truncated series  $f(\eta)$  into Eq. (1.12) and boundary conditions in it. Also, we define Residual function of the form

$$Res(\eta) = \sum_{j=0}^{N-1} a_j \phi_j'''(\eta) + \left(\frac{\lambda+5}{2}\right) \sum_{j=0}^{N-1} a_j \phi_j(\eta) \sum_{j=0}^{N-1} a_j \phi_j''(\eta) - \left(\frac{2\lambda+2}{3}\right) \left(\sum_{j=0}^{N-1} a_j \phi_j'(\eta)\right)^2, \tag{3.51}$$

$$\sum_{j=0}^{N-1} a_j \phi_j(0) = 0, \quad \sum_{j=0}^{N-1} a_j \phi_j''(0) = -1, \tag{3.52}$$

$$\sum_{j=0}^{N-1} a_j \phi_j'(\infty) = 0. \tag{3.53}$$

By applying  $\eta$  in Eq. (3.51) with the  $N$  collocation points which are roots of functions  $L_\alpha^N$ , we have  $N$  equations that generates a set of  $N$  nonlinear equations; also, we have two boundary equations in Eq. (3.52). Now, all of these equations can be solved by Newton method for the unknown coefficients. We must mention Eq. (3.53) is always true; therefore, we do not need to apply this boundary condition.

## 4 Result and discussion

In the following tables and figures we make a comparison between Runge-Kutta solution obtained by the MATLAB software command ODE45 [55] and the obtained results of two presented methods in this paper.

Table 1 shows a good agreement between rational Gegenbauer collocation method by  $N = 13$  and Runge-Kutta method for  $f'(0)$  with various  $\lambda$ . The results for  $f'(0)$  with modified generalized Laguerre collocation method by the same  $N$  have been shown in Table 2 and comparison has been made between the Runge-Kutta solution. Absolute errors in these two tables show that the presented methods give us an approximate solution with a high degree of accuracy with the small  $N$ s.

Some of the computed results for the variations with  $\eta$  of the functions  $f'$  for  $\lambda = 1/4$  and  $\lambda = 3/4$  are listed in Tables 3 and 4, respectively. In these Tables we compare the result of two methods together and with results presented by [55].

**Table 1.** Comparison of  $f'(0)$  for various  $\lambda$  between rational Gegenbauer collocation (RGC) method and Runge-Kutta solution.

$\lambda$	Runge-Kutta solution [55]	$\alpha$	$L$	RGC	Absolute Error
0	0.94760	0.1	1.965	0.94761	0.00001
1/4	0.91130	0.1	1.984	0.91129	0.00001
1/3	0.90030	0.1	1.986	0.90031	0.00001
1/2	0.87980	0.1	1.997	0.87980	0.00000
3/4	0.85220	0.1	2.015	0.85215	0.00005
1	0.82760	0.1	2.025	0.82760	0.00000

**Table 2.** Comparison of  $f'(0)$  for various  $\lambda$  between modified generalized Laguerre functions

collocation method and Runge-Kutta solution.

$\lambda$	Runge-Kutta solution [55]	$\alpha$	$L$	MGLF	Absolute Error
0	0.94760	1	1.2985	0.94770	0.0001
1/4	0.91130	0.94869	1.2493	0.91129	0.00001
1/3	0.90030	1	1.15	0.90031	0.00001
1/2	0.87980	1	1.09	0.87933	0.00047
3/4	0.85220	0.04	1.0394	0.85229	0.00009
1	0.82760	0.655	1.115	0.82760	0.00000

**Table 3.** The comparison of  $f'(\eta)$  for  $\lambda = 1/4$  for present methods and RungeKutta solution.

$\eta$	Runge-Kutta solution [55]	RGC	Error (RGC)	MGLF	Error (MGLF)
0	0.911295	0.911288	0.000007	0.911292	0.000003
0.1	0.813604	0.813597	0.000007	0.813604	0.000000
0.2	0.721351	0.721339	0.000012	0.721433	0.000082
0.3	0.635531	0.635467	0.000064	0.635728	0.000197
0.4	0.556661	0.556579	0.000082	0.557013	0.000352
0.5	0.484997	0.484953	0.000044	0.485487	0.000490
0.6	0.420587	0.420591	0.000004	0.421104	0.000517
0.7	0.363276	0.363284	0.000008	0.363641	0.000365
0.8	0.312677	0.312664	0.000013	0.312746	0.000069
0.9	0.268264	0.268258	0.000006	0.267986	0.000278
1	0.229508	0.229537	0.000029	0.228879	0.000629
1.1	0.195878	0.195947	0.000069	0.194918	0.000900
1.2	0.166847	0.166936	0.000089	0.165591	0.001256
1.3	0.141837	0.141976	0.000139	0.140399	0.001438
1.4	0.120362	0.120571	0.000209	0.118863	0.001499
1.5	0.102025	0.102266	0.000241	0.100533	0.001492

**Table 4.** The comparison of  $f'(\eta)$  for  $\lambda = 3/4$  for present methods and RungeKutta solution.

$\eta$	Runge-Kutta solution [55]	RGC	Error (RGC)	MGLF	Error (MGLF)
0	0.852193	0.852153	0.000040	0.852287	0.000094
0.1	0.755377	0.755336	0.000041	0.755347	0.000030
0.2	0.665448	0.665405	0.000043	0.665243	0.000205
0.3	0.582985	0.582891	0.000094	0.582644	0.000341
0.4	0.508141	0.508021	0.000120	0.507787	0.000354
0.5	0.440849	0.440760	0.000089	0.440604	0.000245
0.6	0.380907	0.380868	0.000039	0.380812	0.000095
0.7	0.327973	0.327951	0.000022	0.327984	0.000011
0.8	0.281536	0.281513	0.000023	0.281607	0.000071
0.9	0.241013	0.241001	0.000012	0.241122	0.000109
1	0.205832	0.205838	0.000006	0.205957	0.000125
1.1	0.175434	0.175452	0.000018	0.175549	0.000115
1.2	0.149275	0.149293	0.000018	0.149354	0.000079
1.3	0.126821	0.126846	0.000025	0.126867	0.000046
1.4	0.107596	0.107639	0.000043	0.107619	0.000023
1.5	0.091196	0.091241	0.000045	0.091186	0.000010

Graphs of the approximations of  $f'(\eta)$  for different values of  $\lambda$  by rational Gegenbauer collocation method and modified generalized Laguerre collocation method are shown in Figs. 2 and 3, respectively. In this case we avoided comparing our solutions with the numerical solution because of having a good agreement.

The logarithmic graphs of the  $\|Res\|^2$  at  $\lambda = 1/2$  for rational Gegenbauer and modified generalized Laguerre collocation methods are shown in Fig. 4. This graph illustrates the convergence rate of

the methods. Furthermore, it shows that the accuracy level of the RGC method is higher in this problem.

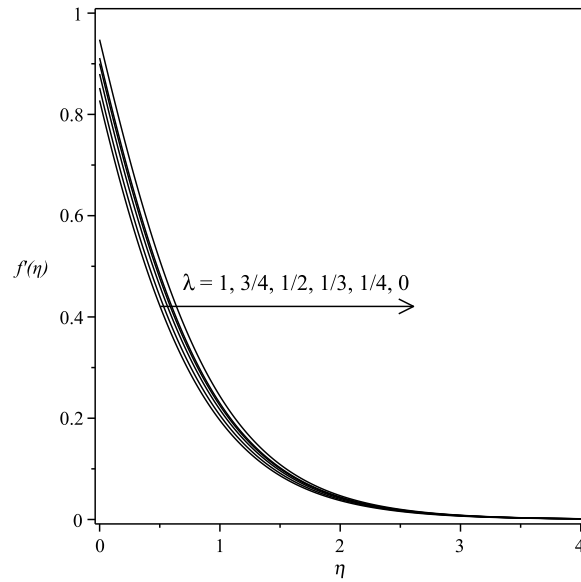


Fig. 2. RGC approximation of  $f'(\eta)$  for different values  $\lambda = 0, 1/4, 1/3, 1/2, 3/4$  and 1.

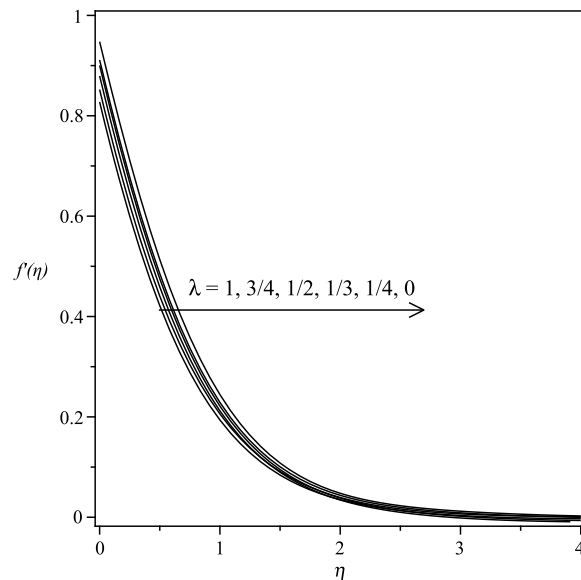


Fig. 3. MGLF approximation of  $f'(\eta)$  for different values  $\lambda = 0, 1/4, 1/3, 1/2, 3/4$  and 1.

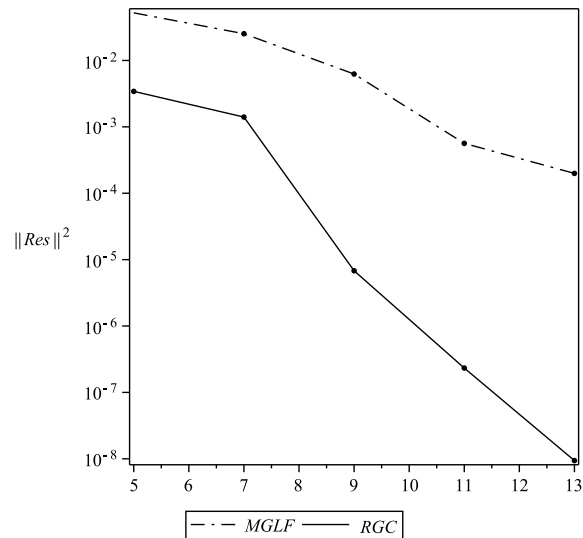


Fig. 4. Graph of  $\|Res\|^2$  by RGCs solution and MGLFs solution.

## 5 Conclusions

In the above discussion, we applied the collocation method to solve three order nonlinear differential equations arising from the similarity solution of inverted cone, embedded in porous medium. This method is easy to implement and yields the desired accuracy. An important concern of collocation the approach is the choice of basis functions. The basis functions have three different properties: easy computation, rapid convergence and completeness, which means that any solution can be presented to arbitrarily high accuracy by taking the truncation  $N$  to be sufficiently large. We used two set of orthogonal functions as the basis function in this method and compared the results. Through the comparisons between the Runge-Kutta solutions [55] and the current works, it was shown that the present works provided acceptable approach for this type of equations. Although both functions lead to more accurate results, it seems that the accuracy and rapidity of RGC method is higher than those of MGLF method in this problem.

## 6 Acknowledgments

The research of first author (K. Parand) was supported by a grant from Shahid Beheshti University.

## References

- [1] B. Alazmi, K. Vafai, Analysis of fluid ow and heat transfer interfacial conditions between a porous medium and a fluid layer, *International Journal of Heat and Mass Transfer* 44 (2001) 1735-1749.
- [2] M. Barkhordari Ahmadi, M. Khezerloo, Fuzzy Bivariate Chebyshev Method for Solving Fuzzy Volterra-Fredholm Integral Equations, *International Journal of Industrial Mathematics* 3 (2011) 67-78.
- [3] A. Bejan, KR. Khair, Heat and mass transfer by natural convection in a porous medium, *International Journal of Heat and Mass Transfer* 28 (1985) 909-918.
- [4] JP. Boyd. Chebyshev and Fourier Spectral Methods, Second Edition, Dover, New York, 2000.

- [5] JP. Boyd, Orthogonal rational functions on a semi-infinite interval, *Journal of Computational Physics* 70 (1987) 63-88.
- [6] JP. Boyd, Spectral methods using rational basis functions on an infinite interval, *Journal of Computational Physics* 69 (1987) 112-142.
- [7] JP. Boyd, The optimization of convergence for Chebyshev polynomial methods in an unbounded domain, *Journal of Computational Physics* 45 (1982) 43-79.
- [8] JP. Boyd, C. Rangan, PH. Bucksbaum, Pseudospectral methods on a semi-infinite interval with application to the Hydrogen atom: a comparison of the mapped Fourier-sine method with Laguerre series and rational Chebyshev expansions, *Journal of Computational Physics* 188 (2003) 56-74.
- [9] C. Canuto, MY. Hussaini, A. Quarteroni, TA. Zang, *Spectral Methods in Fluid Dynamic*, Springer-Verlag, New York, (1987).
- [10] CY. Cheng, An integral approach for heat and mass transfer by natural convection from truncated cones in porous media with variable wall temperature and concentration, *International Communications in Heat and Mass Transfer* 27 (2000) 437-548.
- [11] CY. Cheng, Soret and Dufour effects on natural convection heat and mass transfer from a vertical cone in a porous medium, *International Communications in Heat and Mass Transfer* 36 (2009) 1020-1024.
- [12] P. Cheng, TT. Le, I. Pop, Natural convection of a Darcian fluid about a cone, *International Communications in Heat and Mass Transfer* 12 (1985) 705-717.
- [13] CI. Christov, A complete orthogonal system of functions in  $L^2(-\infty, \infty)$  space, *SIAM Journal on Applied Mathematics* 42 (1982) 1337-1344.
- [14] O. Coulaud, D. Funaro, O. Kavian, Laguerre spectral approximation of elliptic problems in exterior domains, *Computer Methods in Applied Mechanics and Engineering* 80 (1990) 451-458.
- [15] D. Funaro, Computational aspects of pseudospectral Laguerre approximations, *Applied Numerical Mathematics* 6 (1990) 447-457.
- [16] D. Funaro, O. Kavian, Approximation of some diffusion evolution equations in unbounded domains by Hermite functions, *Mathematics of Computing* 57 (1991) 597-619.
- [17] G. Gasper, K. Stempak, W. Trembels, Fractional integration for Laguerre expansions, *Methods and Applications of Analysis* 67 (1995) 67-75.
- [18] D. Gottlieb, M. Y. Hussaini, S. Orszag. *Theory and Applications of Spectral Methods in Spectral Methods for Partial Differential Equations* edited by R. Voigt and D. Gottlieb and M.Y. Hussaini, SIAM, Philadelphia (1984).
- [19] BY. Guo, Error estimation of Hermite spectral method for nonlinear partial differential equations, *Mathematics of Computing* 68 (1999) 1067-1078.
- [20] BY. Guo, Gegenbauer approximation and its applications to differential equations on the whole line, *Journal of Mathematical Analysis and Applications* 226 (1998) 180-206.
- [21] BY. Guo, Gegenbauer approximation and its applications to differential equations with rough asymptotic behaviors at infinity, *Applied Numerical Mathematics* 38 (2001) 403-425.
- [22] BY. Guo, Jacobi approximations in certain Hilbert spaces and their applications to singular differential equations, *Journal of Mathematical Analysis and Applications* 243 (2000) 373-408.
- [23] BY. Guo, Jacobi spectral approximation and its applications to differential equations on the half line, *Mathematical and Computer Modelling* 18 (2000) 95-112.

- [24] BY. Guo, J. Shen, Laguerre-Galerkin method for nonlinear partial differential equations on a semi-infinite interval, *Numerical Mathematik* 86 (2000) 635-654.
- [25] BY. Guo, J. Shen, ZQ. Wang, A rational approximation and its applications to differential equations on the half line, *Journal of Scientific Computing* 15 (2000) 117-147.
- [26] BY. Guo, J. Shen, ZQ. Wang, Chebyshev rational spectral and pseudospectral methods on a semi-infinite interval, *International Journal for Numerical Methods in Engineering* 53 (2002) 65-84.
- [27] BY. Guo, J. Shen, CL. Xu, Generalized Laguerre approximation and its applications to exterior problems, *Journal of Computational Mathematics* 23 (2005) 113-130.
- [28] V. Iranzo, A. Falqués, Some spectral approximations for differential equations in unbounded domains, *Computer Methods in Applied Mechanics* 98 (1992) 105-126.
- [29] DB. Ingham, I. Pop, Natural convection about a heated horizontal cylinder in a porous medium, *The Journal of Fluid Mechanics* 184 (1987) 157-181.
- [30] Z. Lorkojori, N. Mikaeilvand, Two Modified Jacobi Methods for M-Matrices, *International Journal of Industrial Mathematics* 2 (2010) 181-187.
- [31] T. Lotfi, K. Mahdiani, Fuzzy Galerkin Method for Solving Fredholm Integral Equations with Error Analysis, *International Journal of Industrial Mathematics* 3 (2011) 237-249.
- [32] Y. Maday, B. Pernaud-Thomas, H. Vandeven, Reappraisal of Laguerre type spectral methods, *Recherche Aerospaciale, La* 6 (1985) 13-35.
- [33] J. H. Merkin, Free convection boundary layers in a saturated porous medium with lateral mass flux, *International Journal of Heat and Mass Transfer* 21 (1978) 1499-1504.
- [34] J. H. Merkin, Free convection boundary layers on axisymmetric and two dimensional bodies of arbitrary shape in a saturated porous medium, *International Journal of Heat and Mass Transfer* 22 (1979) 1461-1462.
- [35] WJ. Minkowycz, P. Cheng, Free convection about a vertical cylinder embedded in a porous medium, *International Journal of Heat and Mass Transfer* 19 (1976) 805-813.
- [36] WJ. Minkowycz, P. Cheng, Local non-similar solutions for free convective flow with uniform lateral mass flux in a porous medium, *Letters in Heat and Mass Transfer* 9 (1982) 159-168.
- [37] WJ. Minkowycz, P. Cheng, F. Moalem, The effect of surface mass transfer on buoyancy induced Darcian flow adjacent to a horizontal heated surface. *International Communications in Heat and Mass Transfer* 12 (1985) 55-65.
- [38] A. Nakayama, MA. Hossain, An integral treatment for combined heat and mass transfer by natural convection in a porous medium, *International Journal of Heat and Mass Transfer* 38 (1995) 761-765.
- [39] DA. Nield, A. Bejan. *Convection in Porous Media*, third ed., Springer-Verlag, New York, (2006).
- [40] K. Parand, S. Abbasbandy, S. Kazem, A. R. Rezaei, Comparison between two common collocation approaches based on radial basis functions for the case of heat transfer equations arising in porous medium, *Communications in Nonlinear Science and Numerical Simulation* 16 (2011) 1396-1407.
- [41] K. Parand, M. Dehghan, A. Taghavi. Modified generalized Laguerre function Tau method for solving laminar viscous flow: The Blasius equation, *International Journal of Numerical Methods for Heat and Fluid Flow* 20 (2010) 728-743.
- [42] K. Parand, M. Razzaghi, Rational Chebyshev tau method for solving Volterra's population model, *Applied Mathematics and Computation* 149 (2004) 893-900.

- [43] K. Parand, M. Razzaghi, Rational Legendre approximation for solving some physical problems on semi-infinite intervals, *Physica Scripta* 69 (2004) 353-357.
- [44] K. Parand, M. Shahini, Rational Chebyshev pseudospectral approach for solving Thomas-Fermi equation, *Physics Letters A* 373 (2009) 210-213.
- [45] K. Parand, M. Shahini, M. Dehghan, Rational Legendre pseudospectral approach for solving nonlinear differential equations of Lane-Emden type, *Journal of Computational Physics* 228 (2009) 8830-8840.
- [46] K. Parand, A. Taghavi, Rational scaled generalized Laguerre function collocation method for solving the Blasius equation, *Journal of Computational and Applied Mathematics* 233 (2009) 980-989.
- [47] I. Pop, P. Cheng, An integral solution for free convection of a Darcian fluid about a cone with curvature effects, *International Communications in Heat and Mass Transfer* 13 (1986) 433-438.
- [48] I. Pop, T. Y. Na, Natural convection of a Darcian fluid about a wavy cone, *International Communications in Heat and Mass Transfer* 21 (1994) 891-899.
- [49] I. Pop, T. Y. Na, Natural convection over a frustum of a wavy cone in a porous medium, *Mechanics Research Communications* 22 (1995) 181-190.
- [50] SU. Rahman, K. Mahgoub, A. Nafees, Natural Convective Mass Transfer from Upward Pointing Conical Surfaces in Porous Media, *Chemical Engineering Communications* 194 (2007) 280-290.
- [51] DAS. Rees, K. Vafai, Darcy-Brinkman Free Convection from a Heated Horizontal Surface, *Numerical Heat Transfer, Part A* 35 (1999) 191-204.
- [52] J. Shen, Stable and efficient spectral methods in unbounded domains using Laguerre functions, *SIAM Journal on Numerical Analysis* 38 (2000) 1113-1133.
- [53] HI. Siyyam, Laguerre tau methods for solving higher order ordinary differential equations, *Journal of Computational Analysis and Applications* 3 (2001) 173-182.
- [54] AR. Sohoulı, D. Domairry, M. Famouri, A. Mohsenzadeh, Analytical solution of natural convection of Darcian fluid about a vertical full cone embedded in porous media prescribed wall temperature by means of HAM, *International Communications in Heat and Mass Transfer* 35 (2008) 1380-1384.
- [55] AR. Sohoulı, M. Famouri, A. Kimiaefar, G. Domairry, Application of homotopy analysis method for natural convection of Darcian fluid about a vertical full cone embedded in porous media prescribed surface heat flux, *Communications in Nonlinear Science and Numerical Simulation* 15 (2010) 1691-1699.
- [56] I. Stegun, M. Abramowitz. *Handbook of Mathematical Functions*, Dover, New York, (1968).
- [57] G. Szegő. *Orthogonal Polynomials*, 4th edition, AMS Coll. Publ, (1975).
- [58] H. Taseli, On the exact solution of the Schrodinger equation with a quartic anharmonicity, *International Journal of Quantum Chemistry* 63 (1996) 63-71.
- [59] ZQ. Wang, BY. Guo, YN. Wu, Pseudospectral method using generalized Laguerre functions for singular problems on unbounded domains, *Discrete and Continuous Dynamical Systems* 11 (2009) 1019-1038.
- [60] KA. Yih, Coupled heat and mass transfer by free convection over a truncated cone in porous media: VWT/VWC or VHF/VMF, *Acta Mechanica* 137 (1999) 83-97.

- [61] KA. Yih, Uniform transpiration effect on coupled heat and mass transfer in mixed convection about inclined surfaces in porous media: the entire regime, *Acta Mechanica* 132 (1999) 229-240.
- [62] R. Zhang, ZQ. Wang, BY. Guo, Mixed Fourier-Laguerre spectral and pseudospectral methods for exterior problems using generalized Laguerre functions, *Journal of Scientific Computing* 36 (2008) 263-283.