



The Effect of Forest Road Construction on Soil Organic Carbon Stock in Mountainous Catchment in Northern Iran

*Kazem Nosrati * and Saeede Jalali*

*Received: 05 July 2015,
Accepted: 07 August 2015*

Abstract

The main objective of this study was to investigate the effect of forest road construction on the Soil Organic Carbon Stock (SOCS) in Ziarat Catchment. Therefore, soil samples were collected from five land use types including road construction, cultivated area, channel bank, pasture and forest land and soil organic carbon concentration and bulk density were measured in the samples and SOCS were calculated. The results showed that the forest road construction reduce SOCS. SOC stock was greatest in the forest land use and the total SOC stock under different land uses varied in order forest, pasture, cultivate, channel bank and road construction with 143, 136, 128, 36 and 29 Mg ha⁻¹, respectively ($p < 0.001$). Therefore, these results can be useful as a scientific basis for selecting the proper soil erosion control methods as a simple and low-cost approach to mitigate the SOC loss.

Keywords:

Forest road, Organic carbon stock, Ziarat Catchment, Different land uses, Soil erosion

INTRODUCTION

The forest ecosystem is one of the several ecosystems being considered for storing additional carbon since it is unique in containing large above- and below-ground stocks of carbon (Johnson and Kern, 2002). Although 40% of soil carbon is found beneath forests, carbon is accumulated in forest soils (especially in mountainous areas) (Lal, 2005; Peltoniemi *et al.*, 2007). Variations in soil OC stocks are related to a number of natural factors (e.g. climate, parent material, landscape position) and human-induced factors (e.g. land use type, management intensity) (Mou *et al.*, 2005; Somaratne *et al.*, 2005; Tan *et al.*, 2004). Of these factors, land use is the most sensitive to human disturbance. Monitoring the SOC for different land uses is essential for estimating the SOC distribution and stock (Fang *et al.*, 2012). Road construction removes the forest vegetation, disturbs forest floor, and damages soil structure, which dramatically increases the sediment yield (Demir and Hasdemir, 2005). In order to protect forest areas from land use change, it is necessary to quantify forest productivity and to consider among forest benefits not only the production of wood (for biofuel or timber), resins or cellulose, but also the provision of environmental services like carbon storage, aquifer recharge, soil and surface water conservation, etc. (Peña-Ramírez *et al.*, 2009). Several studies have estimated the differences in the SOC in relation to vegetation and topography, land use, and climate. Kucuker *et al.* (2015) evaluated the impact of land use change on the soil carbon stock in the Karasu region of Turkey, and estimated

average carbon stocks at the depth of 0–1 m to be 12.36 and 12.12 kg/m² in forested and agricultural soils, respectively. (Korkanç, 2014) In an investigation on the effects of a forestation on soil organic carbon and other soil properties, Korkanç (2014) found that these values were significantly higher than the values for the bare land soils (0.54%). For all types of land use, the amount of the SOC in the soils decreased with depth. The amount of carbon sequestered in Black Pine, Cedar and bare land sites at the depths of 0–10 cm and 10–20 cm were 18.20 t/ha and 16.33 t/ha, 23.54 t/ha and 12.38 t/ha and 11.2 t/ha and 7.22 t/ha, respectively. The objective of this study was to investigate the effect of road construction (Figure 1) on carbon stock rate in Ziarat catchment in Golestan province in Iran.

MATERIALS AND METHODS

The study area was Ziarat catchment (54°23' to 54°31'N and 36°36' to 36°43' E) which is located in the 10 km Southern of Gorgan, part of Gharesoo Drainage Basin, Golestan Province, Iran (Figure 1). The drainage area of the catchment is 77 km². Ziarat catchment has a mountainous topography and is covered with forest with minimum and maximum altitudes of 703 m and 3020 m above the sea level, respectively. The long-term (2002-2012) mean annual precipitation is 531 mm in the region where it mostly occurs in late autumn and winter.

Sampling and data collection

According to land use, five sites were sampled including forest, arable lands, pasture, road and



Figure 1: An example of a damaged road verges in Ziarat catchment.

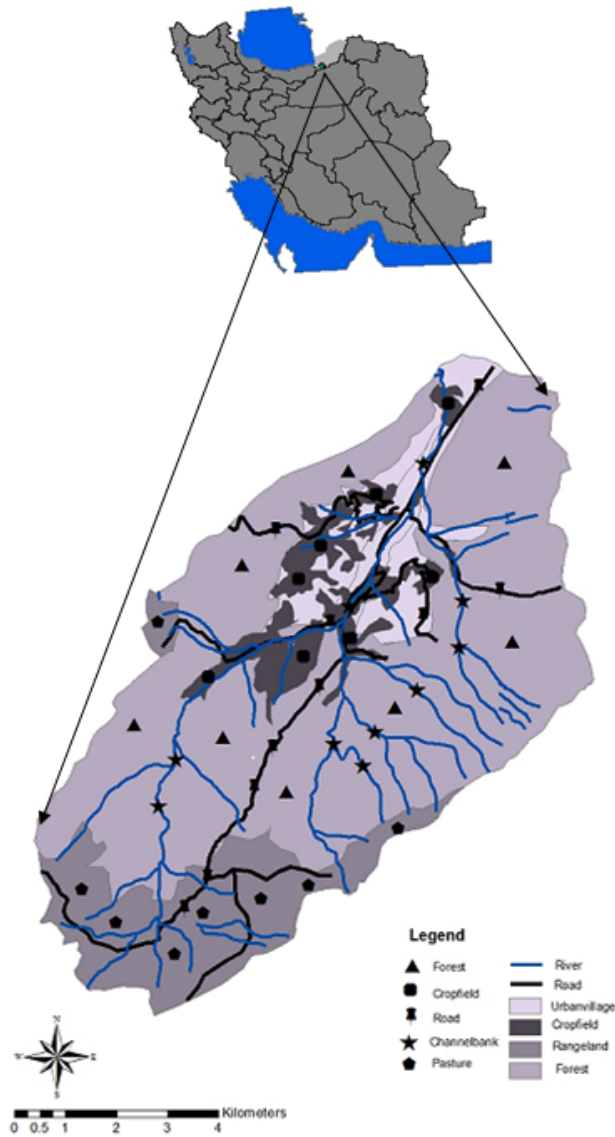


Figure 2: Soil sampling site - Ziarat catchment- Iran

channel bank from which 8, 8, 8, 10 and 9 representative samples were collected at different locations within the Ziarat catchment, respectively (Figure 2). Sampling sites were selected so that similar land forms (slope, aspect and elevation) or uniform topographic positions were selected in all sites. The samples were collected by taking a representative sample from the top soil layer (0–5 cm). In each sampling site, five sub-samples were collected over an area of approximately 100 m² which were mixed into a single composite sample.

Soil bulk density was measured on 6 cm long and 6 cm diameter stainless steel cores. Samples were air-dried and sieved (<2 mm) for organic C concentrations measurement.

The organic C content was measured by the

Walkley-Black method (Skjemstad and Baldock, 2008). The SOC and stocks were calculated based on the following formula (Yu *et al.*, 2007):

$$SOCD = (1 - \theta_i \%) \times \rho_i \times C_i \times T_i / 100$$

where, SOCS (Mg ha⁻¹) is soil organic carbon stock, θ_i is gravel content (>2 mm) in horizon i (%), ρ_i is soil bulk density in horizon i (Mg m⁻³), C_i is the concentration of organic carbon or total nitrogen in horizon i (g kg⁻¹), T_i is the thickness of horizon i (cm), and n is the number of horizons involved.

Statistical analyses

Data were examined using the Kolmogorov-Smirnov test for normality and the Levene test for

The Effect of Forest Road Construction / Nosrati and Jalali

Table 1: Descriptive statistics of SOCS in different land use types

Land use	No. of samples	SOCS (Mg ha ⁻¹)		
		Mean	SD	SE
Total	43	94.3	21.3	5.30
Road	9	29	20.7	7.30
Channel bank	10	36.5	20.8	6.20
Forest	8	142	28.8	10.2
Pasture	8	136	19.3	6.80
Cultivate	8	128	23.7	13.4

Table 2: One way ANOVA for the effects of land use types on SOC

Effect	df	SS	MS	F	p-value
Intercept	4	112468	28117	53	0.000
Land use	38	19810	521	4	0.000
Total	43	10185			

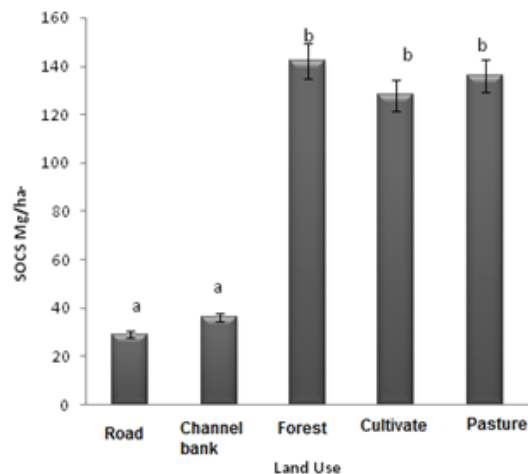


Figure 3: SOCS in different land use units are significantly different at 1% level.

homogeneity of variance. These statistical analyses were followed by one-way ANOVA (F-test) and unequal N Tukey HSD, post-hoc tests for the identification of significant differences among treatments (Nosrati, 2013). Statistical analyses were carried out using SPSS.16 Software Package.

RESULTS

Comparison of organic carbon stored in the analysis of variance showed a significant difference in soil organic carbon storage in road and channel bank with other land uses. But there was no significant difference in the other land uses of the forest, pasture and agriculture (Table 1). There are maximum range SOCS in forest land 142 (Mg ha⁻¹) and minimum of it in

road construction 29 (Mg ha⁻¹). SOCS in roads and channel banks are less than other land uses. Moreover the results of one way ANOVA showed that SOCS are significantly different in land use types (Table 2 and Figure 3).

DISCUSSION

The results of this investigation suggest that damaged road verges can represent an important primary source of soil erosion. Very few studies have been done on the effect of road construction in soil organic carbon stock. Pearson *et al.*, (2014) studied carbon emissions from tropical forest degradation caused by logging and found that logging infrastructure factors for three countries varied by almost a four-fold factor between the

lowest and highest value. In all cases, roads and desks dominated total infrastructure emission of SOC representing 96% of emission in RO Congo, 70% in Indonesia and 83% in Guyana. Our purpose of this study was to study the effect of forest road in organic carbon stocks in Ziarat basin, Iran. So, SOC was investigated in five land uses and results showed that there were difference in SOC rates among forest road, channel banks and some land uses.

ACKNOWLEDGEMENT

This study was funded by a grant from the Research Council of Shahed Beheshti University, Tehran, Iran. The authors gratefully thanks for the constructive feedbacks of the editor and two anonymous reviewers which significantly helped to improve the manuscript.

REFERENCES

- 1- Demir, M., & Hasdemir, M. (2005). Functional planning criterion of forest road network systems according to recent forestry development and suggestion in Turkey. *American Journal Environment Science*, 1(1), 22-28.
- 2- Fang, X., Xue, Z., Li, B., & An, S.H. (2012). Soil organic carbon distribution in relation to land use and its storage in a small watershed of the Loess Plateau, China. *CATENA*, 88(1), 6-13. doi: <http://dx.doi.org/10.1016/j.catena.2011.07.012>
- 3- Johnson, M. G., & Kern, J. S. (2002). Quantifying the organic carbon held in forested soils of the United States and Puerto Rico. *The potential of US forest soils to sequester and mitigate the greenhouse effect*, Lewis, Boca Raton, 47-72.
- 4- Korkanç, S.Y. (2014). Effects of afforestation on soil organic carbon and other soil properties. *CATENA*, 123, 62-69. doi: <http://dx.doi.org/10.1016/j.catena.2014.07.009>
- 5- Kucuker, M.A., Guney, M., Oral, H., Volkan, C., Nadim K., & Onay, T. (2015). Impact of deforestation on soil carbon stock and its spatial distribution in the Western Black Sea Region of Turkey. *Journal of Environmental Management*, 147, 227-235. doi: <http://dx.doi.org/10.1016/j.jenvman.2014.08.017>
- 6- Lal, R. (2005). Forest soils and carbon sequestration. *Forest Ecology and Management*, 220(1): 242-258.
- 7- Mou, P., Jones, R.H., Guo, D., & Lister, A. (2005). Regeneration strategies, disturbance and plant interactions as organizers of vegetation spatial patterns in a pine forest. *Landscape Ecology*, 20(8), 971-987.
- 8- Nosrati, K. (2013). Assessing soil quality indicator under different land use and soil erosion using multivariate statistical techniques. *Environmental Monitoring and Assessment*, 185(4), 2895-2907.
- 9- Pearson, T.R.H., Brown, S., Sohngen, B., Henman, J., & Ohrel, S. (2014). Transaction costs for carbon sequestration projects in the tropical forest sector. *Mitigation and Adaptation Strategies for Global Change*, 19(8): 1209-1222. doi:10.1007/s11027-013-9469-8
- 10- Peltoniemi, M., Thurig, E., Ogle, S., Polosuo, T., Schrupf, M., Wutzler, T., Butterbach-Bahl, K., Chertov, O., Komarov, A., Mikhailov, A., Gaerdenaes, A., Perry, C., Liski, J., & Smith, P. (2007). Models in country scale carbon accounting of forest soils. *Silva Fenn*, 41, 575-602.
- 11- Peña-Ramírez, V. M., Vázquez-Selem, L., & Siebe, C. (2009). Soil organic carbon stocks and forest productivity in volcanic ash soils of different age (1835-30,500 years BP) in Mexico. *Geoderma*, 149(3), 224-234.
- 12- Skjemstad, J. O., & Baldock, J. A. (2008): Total and organic carbon. In M. R. Carter & E. G. Gregorich (Eds.), *Soil Sampling and Methods of Analysis* 2 ed. (pp. 225-237): Boca Raton: CRC Press
- 13- Somaratne, S., Seneviratne, G., & Coomaraswamy, U. (2005). Prediction of soil organic carbon across different land-use patterns. *Soil Science Society of America Journal*, 69(5), 1580-1589.
- 14- Tan, Z., Lal, R., Smeck, N.E., Calhoun, F.G., Slater, B. K., Parkinson, B., & Gehring, R.M. (2004). Taxonomic and geographic distribution of soil organic carbon pools in Ohio. *Soil Science Society of America Journal*, 68(6), 1896-1904.
- 15- Yu, D.S., Shi, X.Z., Wang, H.J., Sun, W.X., Chen, J.M., Liu, Q.H., & Zhao, Y.C. (2007). Regional patterns of soil organic carbon stocks in China. *Journal of Environmental Management*, 85(3), 680-689.

How to cite this article:

Nosrati, K., & Jalali, S. (2016). The effect of forest road construction on soil organic carbon stock in mountainous catchment in northern Iran. *International Journal of Agricultural Management and Development*, 6(2), 211-215.

URL: http://ijamad.iaurasht.ac.ir/article_523367_4cad03b2270652a997ac865f1cb4c424.pdf

