



*

:

:

*

Coon, 1951:)

(116

()

.(Coon, 1952: 231)

(Coon, 1952: 235)

-

" "

(Coon, 1957: 172)

" "

Coon,)

(1957: 159

-

Coon,)

(1952: 234-235

Coon,)

(1957: 196-198, Ralph, 1955

(Coon, 1952: 231)

.

.D C B A

-

A

(Coon, 1957: 159-160)

D

(Coon, 1957: 170)

(Coon, 1952: 232)

Coon, 1952:)

(234

(McCown, 1954)

.(Coon,1957: 168)

C

.(Coon,1957: 180)

() .

A

*

.(Coon, 1952: 232)

B A

/ (Coon,1957: 172)

"

.(Coon,1957: 177)

"

/

A .(Coon,1957: 179)

/

B

.(Coon,1957: 188, 1952: 232)

A

D

B A

A

.(Coon,1957: 179-180)

C

B A

/

B

C

/ Coon,1952: 233-234, 1957:)
/ . (190-192

-
/ D

/ A

- A B C B
B

Coon,) A
(1952: 240, fig 14 (Coon, 1957: 180)

D
/
(Coon, 1952: 233)

(Coon, 1957: 199)

Dupree 1952; Coon, 1952: 244-)
(9, fig17

/ / / /
A /

-

Mc) (Coon, 1952: fig 14) D
()

(Coon, 1954

/ -

/

o

Coon,)

(1957: 186

(Coon,1952: 241-2)

:

/ - /
± " B

" . -

(Coon,1952: 242)

Coon,1957:)

(170

C

/

-(Coon, 1952: 242-3)

.(Coon,1957: 197)

-(Coon, 1957:198)

210 ±) .

(±

-(Ralph, 1955)

(Ralph, 1955: 150-151)

" "

.(Coon,1957:197-8)

.(Coon, 1957: 197)

Islamic	1,220±	230B.P.=	A.D.730
Parthian?	2,200±	280B.P.=	250B.C.
Early Iron Age (12 samples from	2,685±	210B.P.=	735B.C.
to	2,950±	230B.P.=	1000B.C.
Painted Pottery	4,830±	480B.P.=	2880B.C.
Software Neolithic	6,385±	425B.P.=	4435B.C.
Sub – Neolithic Vole-Eaters	8,070±	500B.P.=	6120B.C.
(3 skeletons)	9,190±	590B.P.=	7240B.C.
(2 samples)	9,220±	570B.P.=	7270B.C.
Seal-Hunters	11,860±	840B.P.=	9910B.C.

) (Coon,1957: 200)

Ralph, 1955:) A ((Coon,1957: 197)

(150

()

(Coon,1957: 197, 200)

()

()

(1951: 116)

" "

(Coon,1957)

) /

(Coon,1957:199)

/

(/ /

(Coon, 1952: 240)

(Coon,1952: 241-2)

(Coon,1957: 168)

.(Coon, 1952: 242)

A :
C B

Coon, 1952: 242-) II . (3

/ .(Coon, 1957: 197)

)

(

(:

(

(

Deshayes, 1976, 1979,)

.(Crawford, 1963

-

Henrickson,)

.()

(1991

/ D

/

(Coon, 1957: 192)

D

Dupree,)

(1952

:

.Lalailoy Tepe - ١٩

. Out - ١

.Elizabeth Ralph - ٢٠

. Hotu - ٢

.Science - ٢١

. Flat Iron - ٣

Some Time)

. Ho - ٤

(during the first five centuries B.C

. Tu - ٥

.Louis Dupree - ٦

Dupree,)

(1952

(Coon, 1952: 242)

Coon, 1957:)

.Late Iron Age - ٢٤

(159

/

(Coon, 1952: 232)

.almost sterile - ١٠

.Angel, 1952 :

.Persian Pick - ١٢

Curator of general Ethnology - ٢٧

.unconsolidated silt clay - ١٣

Seven Caves - ٢٨

.silt clay - ١٤

.Single soil - ١٥

.gravels - ١٦

- Angel, J. Lawrence. 1952, "The Human Skeletal Remains from Hotu Cave, Iran". in *Proceeding of the American Philosophical Society*, Vol 96, No 3, pp. 258-269.
- Coon, Carleton S. 1951, "Excavations in Hotu Cave, Iran, A Preliminary Report", in *Proceeding of the American Philosophical Society*, Vol 96, No 3, pp. 231-249.
- Coon, Carleton S. *Seven Caves*, Jonathan Cape Thirty Bedford Square, New York.
- Crawford, V.E. 1963, "Beside the Kara Su", *Bulletin of the Metropolitan Museum of Art*, 22, pp. 263-273.
- Deshayes, J. 1979, "Les niveaux de l'âge du fer à Tureng Tépé" in *Akten des VII. Internationalen Kongress für Iranische Kunst und Archäologie*, AMI, Ergänzungsband 6, pp. 29-34.
- Deshayes, J. 1976, "Tureng Tépé", *Iran* 14, pp. 169-71.
- Dupree, Louis B. 1952, "The Pleistocene Artifacts of Hotu Cave, Iran". in *Proceeding of the American Philosophical Society*, Vol 96, No 3, pp. 250-257.
- Dyson, Robert. 1991, "The Neolithic Period through the Bronze Age in Northeastern and North-Central Persia" under "CERAMIC" in *Encyclopaedia Iranica*, Ehsan Yarshater (ed.), Vol V, Fascicle 3, Mazda Publishers, Costa Mesa, California, pp. 266-275.
- Henrickson, Robert C. 1991, "The Iron Age", under "CERAMIC", *Encyclopaedia Iranica*, Ehsan Yarshater (ed.), Vol V, Fascicle 3, Mazda Publishers, Costa Mesa, California, pp. 300-302.
- Mc Cown, Donald E. 1954, "The Relative Stratigraphy and Chronology of Iran" in *Relative Chronology in Old World Archaeology*, Robert W. Ehrich (ed.), University of Chicago Press, pp. 56-68.
- Ralph, Elizabeth K. 1955, "University of Pennsylvania Radiocarbon Dates I", *Science*, Vol 121, No 3136, pp. 149-51.
- (Note), 1949, "University Museum Excavation in Iran", *Archaeology*, Vol IV, 1951, pp. 116 – 118.

(Coon, 1957; 180)

A

A

B

C

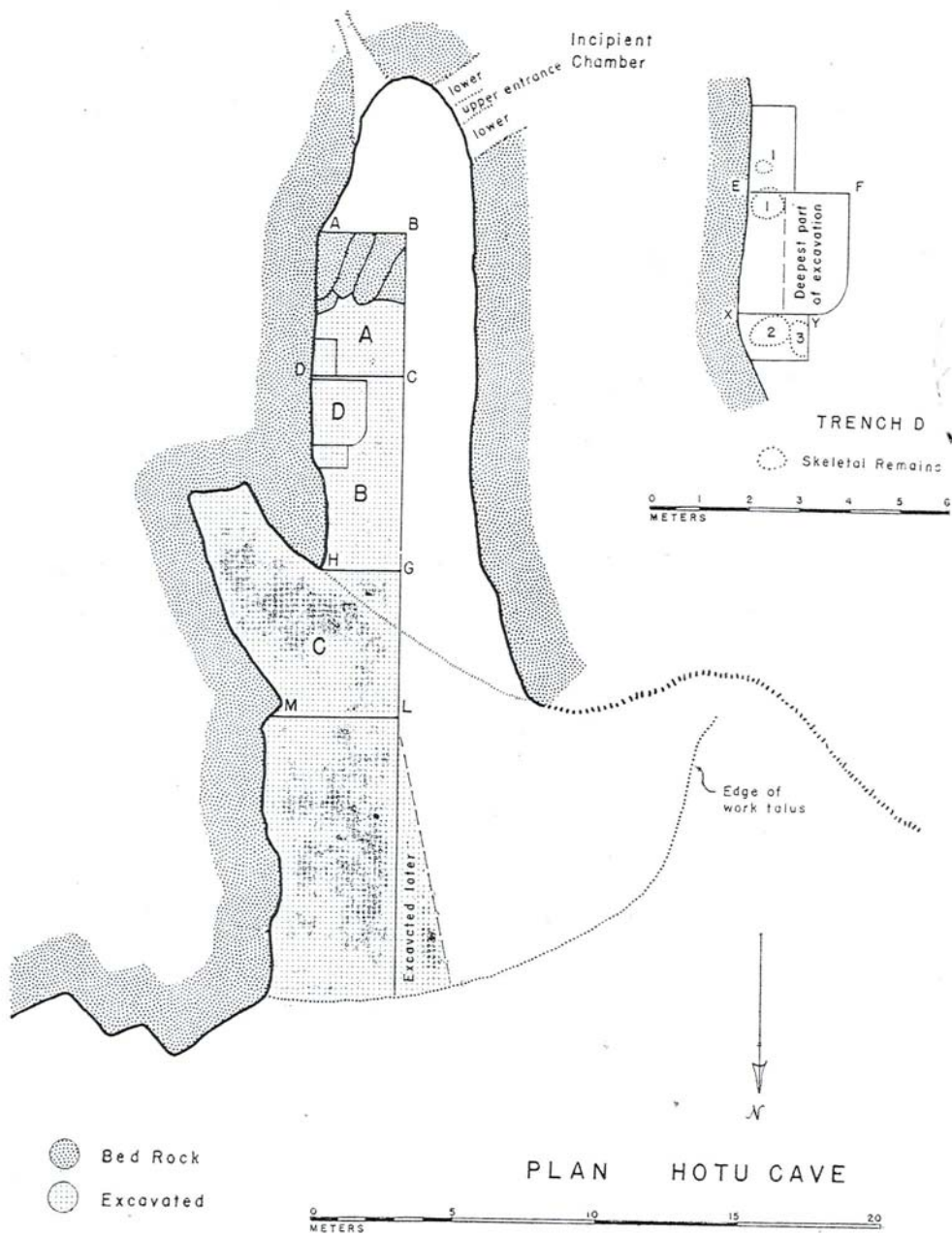
.Lalailou -۳۲

-۳۳

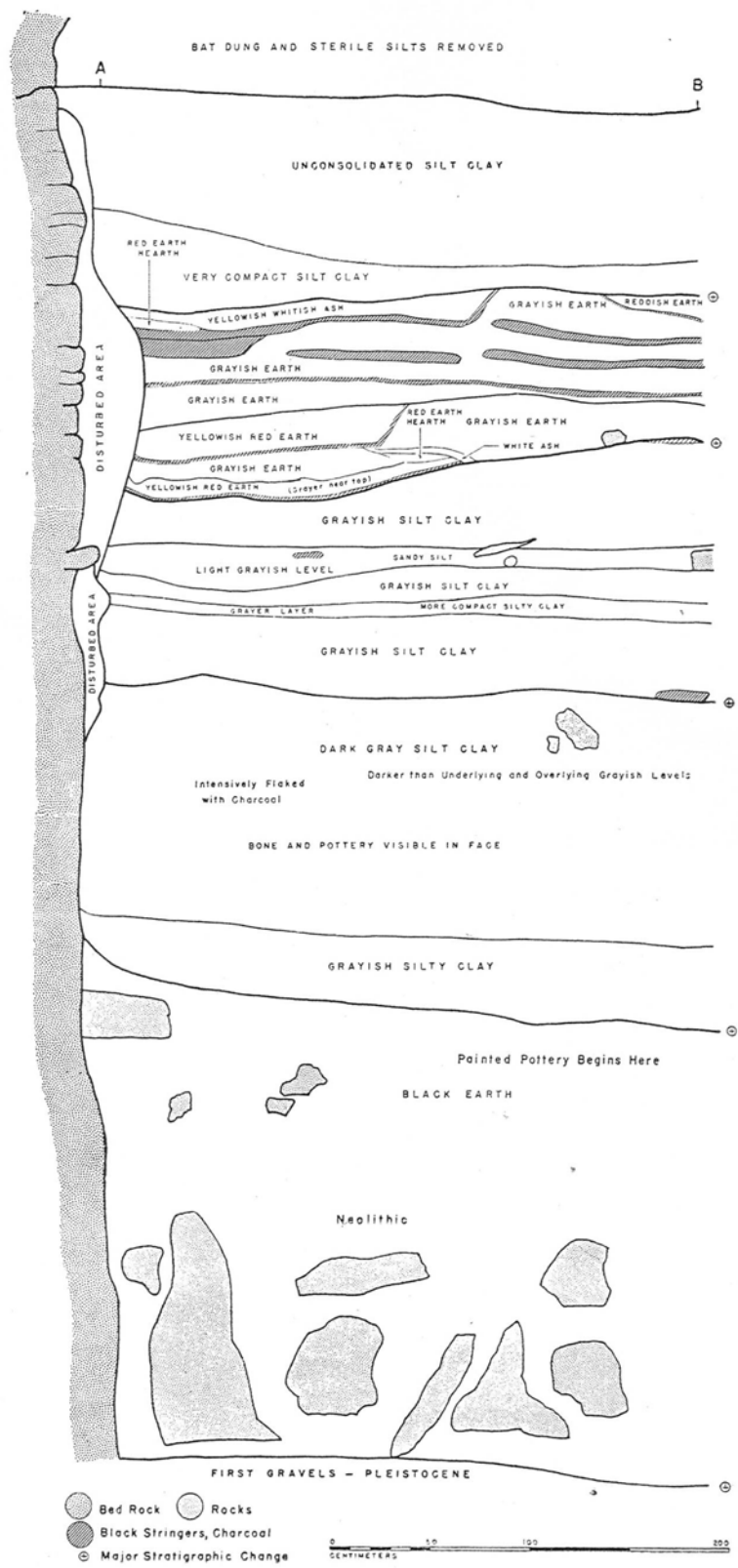
.(Dyson, 1991: 266-268, fig 15)

B

500+



(Coon, 1952:) :



(Coon, 1952 :) A

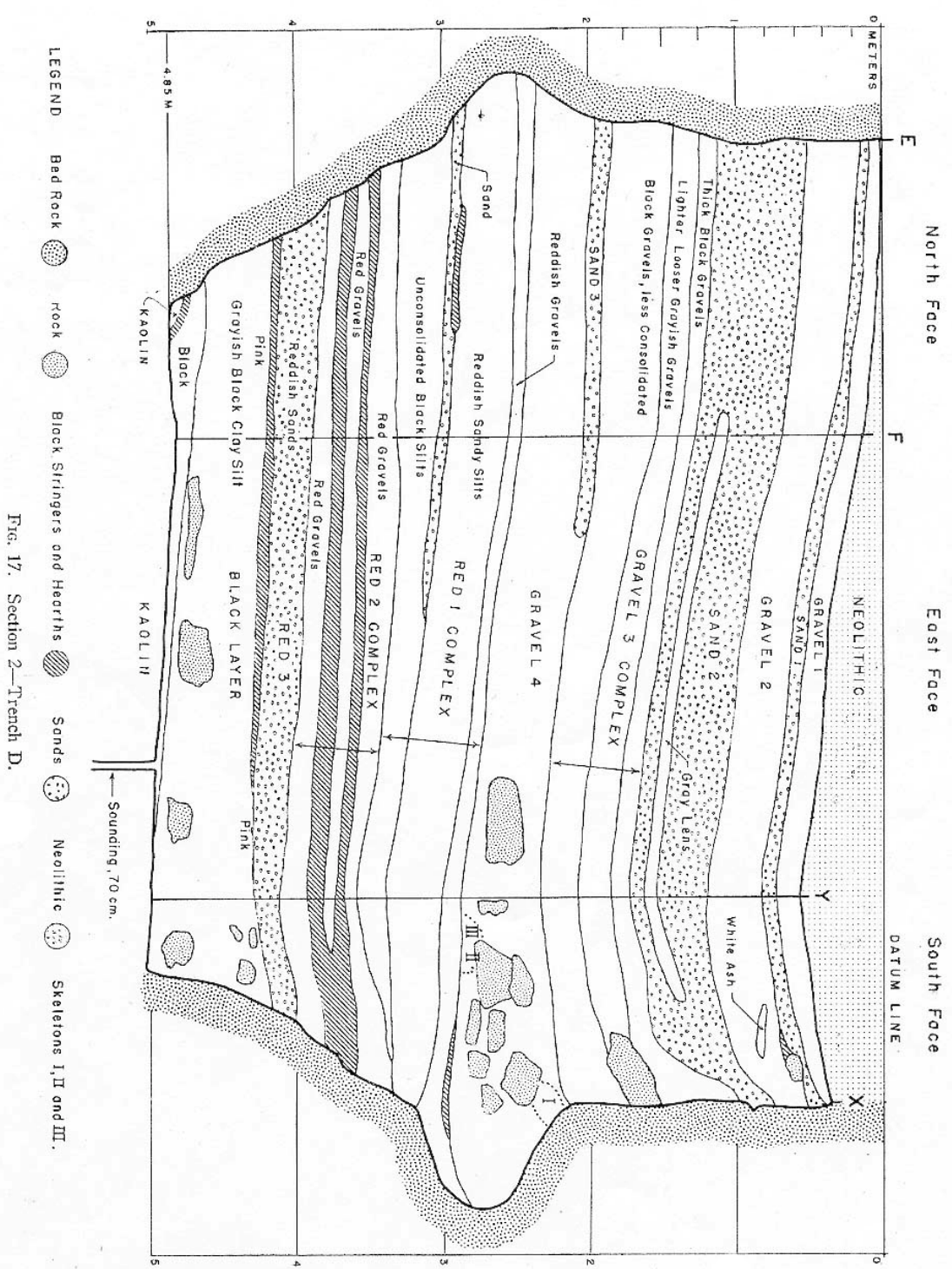
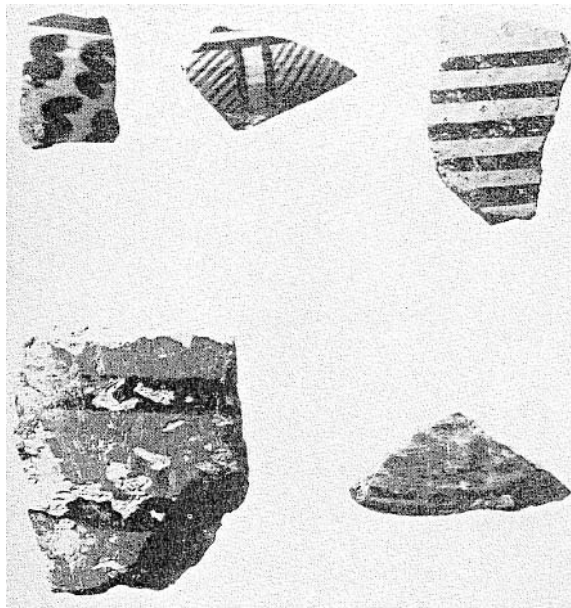
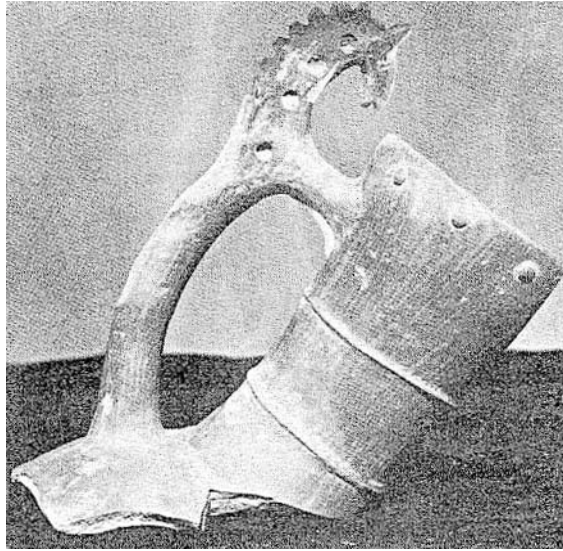


Fig. 17. Section 2—Trench D.

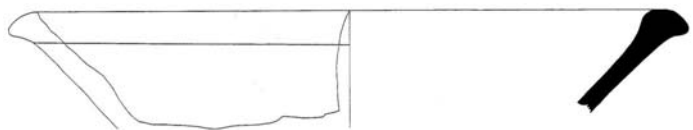
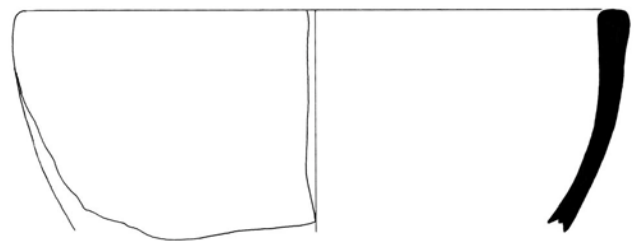
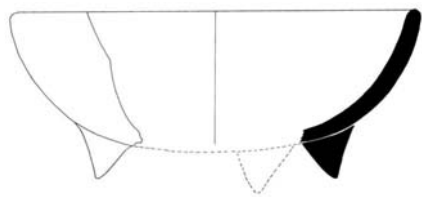
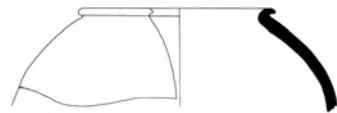
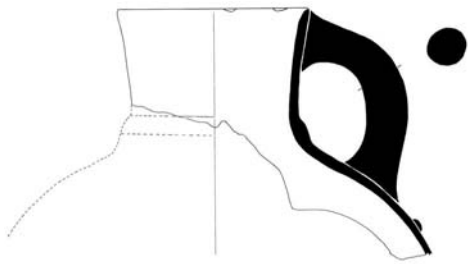
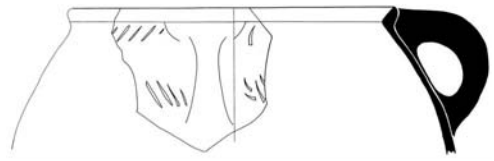
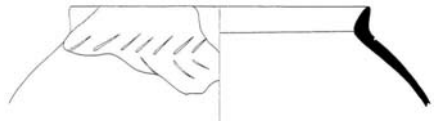
- LEGEND
- Red Rock
 - Rock
 - Black Stringers and Hearths
 - Sands
 - Neolithic
 - Skeletons I, II and III.

(Coon, 1952 :) D

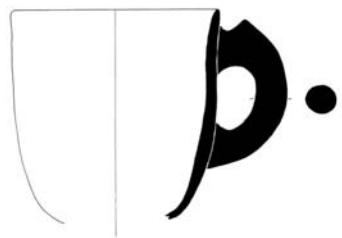
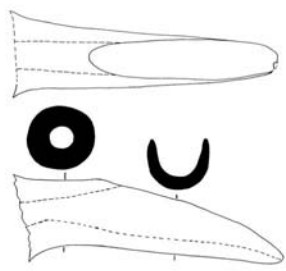
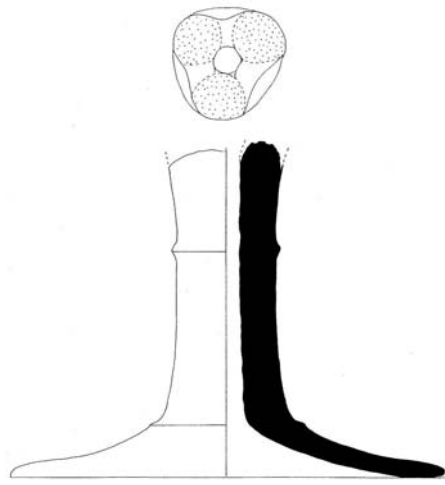
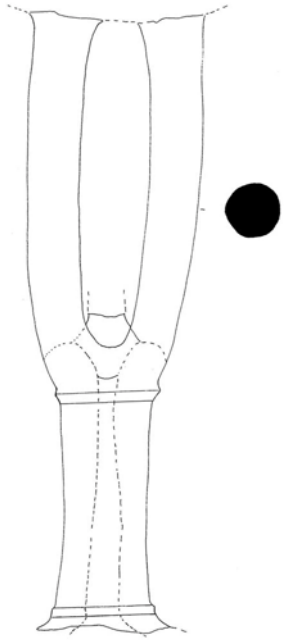
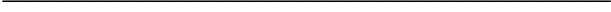


(Coon, 1952: fig 19, 20:)

:



:



			3 Very dark gray	3 Very dark gray			B	
			5 YR-2.5/1-black	5 YR-2.5/1-black			A	
-			2.5YR-4/6 red	2.5YR-4/6 red			B	
			2.5YR-5/8 red	2.5YR-5/8 red			C	
-			2.5YR-5/6 red	2.5YR-5/6 red			B	
-			2.5YR-5/6 red	2.5YR-5/6 red			C	
-			2.5YR-5/6 Yellowish red	2.5YR-5/6 Yellowish red			A	
-			2.5YR-6/6 light red	2.5YR-6/6 light red			C	
-			2.5YR-5/8 red	2.5YR-5/8 red			C	
			2.5YR-5/6 red	2.5YR-5/6 red			C	
-			5 YR - 6/4 light reddish brown	2.5YR-4/4 reddish brown				
			2.5YR-5/6 red	2.5YR-5/6 red				
-			2.5YR-5/6 red	2.5YR-5/6 red			B	

()
