



## ORIGINAL ARTICLE

## Kinetic and Equilibrium Studies for Dye Adsorption onto Sugarcane Bagasse and Rice Husks

Noorul Hudai Abdullah<sup>\*1</sup>, Nur Atikah Abdul Salim<sup>1</sup>, Baizura Binti Hamid<sup>1</sup>, Muhammad Azri Nizamudin<sup>1</sup>, Muhammad Fauzul Mubarak Ahmad Fadhil<sup>1</sup>, Nurhana Syahira Azman<sup>1</sup>, Nur Farhan Zon<sup>2</sup>, Masiri Kaamin<sup>1</sup>, Amir Khan Suwandi<sup>1</sup>, Noraziah Ahmad<sup>2</sup>, Zainab Mat Lazim<sup>2</sup>, Maria Nuid<sup>2</sup>, Nur Azmira Zainuddin<sup>2</sup>

<sup>1</sup>Centre for Diploma Studies, Faculty of Civil Engineering, Universiti Tun Hussein Onn Malaysia, 84600 Muar, Johor, Malaysia

<sup>2</sup>School of Civil Engineering, Faculty of Engineering, Universiti Teknologi Malaysia, 81310 UTM Johor, Malaysia

(Received: 22 December 2020

Accepted: 18 February 2021)

## KEYWORDS

Dye;  
Kinetic;  
Isotherms;  
Sugarcane bagasse;  
Rice husks

**ABSTRACT:** The textile industry discharges large quantities of highly colored wastewater from industrial processes using chemical components. Many dyes are designed to be chemically stable so that they are difficult to decolorize due to their complex structure and synthetic origin. The dye waste is subsequently released directly to water bodies during the textile finishing process. This improper released has adverse effects on the environment and may reduce photosynthesis in aquatic plants. Even though adsorption techniques have been widely used to remove textile dye from waters, the kinetic models used to describe the adsorption of textile dye onto a porous material is still not yet fully understood. This study investigated different applications of absorbent from sugarcane bagasse (SB) and rice husks (RH) in removing color from aqueous solution and the application of kinetic model for adsorption of color from aqueous solutions onto SB and RH. A batch study was carried out under various mass of adsorptions and contact time with constant with the initial concentration of aqueous solution was 400ADMI. The data obtained from batch experiments showed that the removal of RH (93%) was more efficient than SB (49%). This study also advanced the understanding on the kinetic adsorption study of RH and SB to prove that the adsorbents have potential to reduce dye from synthetic solution. The contribution of this study in the removal of significant dye pollutants from industrial wastewater will require future assessment in a prospective wastewater treatment facility setting.

## INTRODUCTION

The color of effluent released into the receiving water has become a major environmental problem in recent years[1]. Textile, pulp, and paper effluent discharges often impart color to the receiving waters for miles downstream from the source[2]. Manufacturing industries for coloring and many other industries that use dyes and pigments produce wastewater that is high in color and organic content[3]. The excessive application of dyes can give a negative impact. For example, if chemicals that are used to produce synthetic dyes find their way into water bodies, it will affect human health and the environment[4]. These compounds, when

ingested or even in contact with human skin, cause adverse effects ranging from hormone disruption in children to cancer in employees in factories and people who drink polluted water[5,6].

Many investigations in recent years focused on the treatment of synthetic dye using kinetic adsorption model, which are pseudo-first order (PFO) and pseudo-second-order (PSO)[7-9]. Furthermore, the adsorption has potential as one of the most efficient methods of wastewater treatment as well as eliminating organic contaminants in synthetic dyes production[10]. Due to a clear and simple design, adsorption has more advantages

\*Corresponding author: noorul@uthm.edu.my (N. Hudai Abdullah)  
DOI: 10.22034/jchr.2021.682247

compared to other treatment methods, which require low investment in terms of management and operation costs[11]. Although many adsorption models have been used in removing dye from wastewater, the use of the adsorption kinetic model and comparison with SB and RH need to be verified[2]. This study sought to compare the different applications of adsorbents from SB and RH in removing the dye concentration from synthetic wastewater and the use of kinetic for adsorption of dye from aqueous solutions onto SB and RH.

## MATERIALS AND METHODS

### Materials

The SB and RH were collected from Pontian, Johor and Ipoh, Perak, respectively. These materials were first cleaned with tap water to clean the dirt on the material. The samples were dried under sunlight. Then, they were rinsed with distilled water to wash off unwanted substance on the adsorbent. This followed by drying in an oven for 3 to 4 hours at 105°C. The SB was taken out from the oven and cut into small pieces before grinding it using grinder mixer. The purpose of grinding the SB is to ease the sieving process to obtain enough adsorbent for the batch experiments[12].

### Preparation aqueous solution

Synthetic dye aqueous solution was prepared by dissolving 0.001g of methylene blue into 1L of deionized water in a volumetric flask[13].

### Batch experiment

Each sample of dye solution 150ml mixed with adsorbent were shaken using an apparatus called orbital shaker at constant speed of 170 rpm in conical flask. The HACH DR 6000 Spectrophotometer was used to determine the concentration of the retained dye. Each sample was analyzed by measuring the intensity of light passing through the samples according to HACH Method 10048 which is ADMI Weighted Ordinate Method[14]. The data of the light intensity was recorded for 10 flasks of the sample at different times up to 5 days until equilibrium condition.

## RESULTS AND DISCUSSION

### The effect of contact time for sugarcane bagasse

The effect of time was conducted to find the optimum time where the removal efficiency is the highest and at equilibrium state. In this study, the experiments for the effect of contact time were observed for up to 5 days as it is considered to be the maximum time to allow a proper absorption to occur. Table 1 shows the removal efficiency, E (%) for 2 g of SB and tested on 150 mL of synthetic dye 400ADMI.

**Table 1.** The removal efficiency based on different contact times

Time (min)	Initial Concentration, $C_0$ (mg L <sup>-1</sup> )	Final Concentration, $C_t$ (mg L <sup>-1</sup> )	Removal Efficiency, E(%)
0	400	0	0
30	400	246	34
60	400	231	35
120	400	230	43
180	400	226	44
240	400	215	44
420	400	208	45
1440	400	203	46
2880	400	200	47
4320	400	199	48
5760	400	198	49

Figure 1 shows the effect of time on removal percentage. Based on Figure 1, there is a steady increase in removal efficiency starting from 48% until it reaches the highest at 49%. When the time increase, the removal percentage

increase. The optimum time was recorded at 4320 minutes where the removal efficiency at constant rate it indicates that the equilibrium time at 4320 minutes.

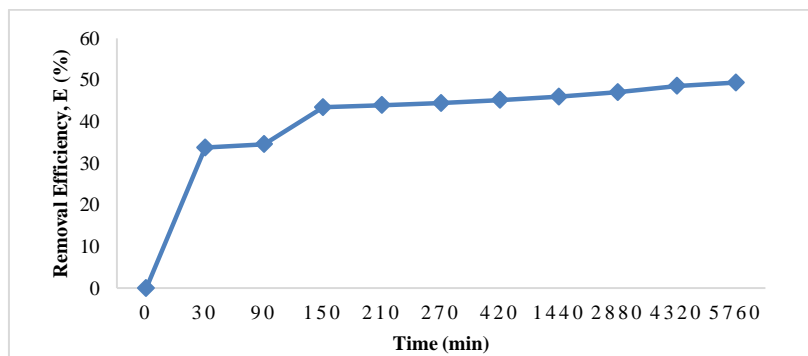


Figure 1. The effect of contact time on removal efficiency

#### The effect of contact time for rice husks

The experiment effect of time is conducted to find the optimum time where the removal efficiency is the highest and reach the equilibrium state. In this study, the experiments on the effect of contact time are observed for up to 5 days as it is considered to be the maximum appropriate time to allow proper absorption to occur.

Table 2 shows the removal efficiency, E (%) for removing dye using 2g of RH adsorbent and tested on 150ml of synthetic dye 400ADMI. The highest removal efficiency of RH from synthetic dye solution is 93% starting 1440 minutes.

Table 2. The removal efficiency based on different contact times

Time (min)	Initial Concentration, $C_0$ (mg L <sup>-1</sup> )	Final Concentration, $C_t$ (mg L <sup>-1</sup> )	Removal Efficiency, E (%)
0	400	0	0
30	400	50	88
60	400	47	88
120	400	42	90
180	400	39	90
240	400	32	92
420	400	32	92
1440	400	30	93
2880	400	29	93
4320	400	29	93
5760	400	28	93

Based on Figure 2, the equilibrium state starts from 88% and reaches the highest removal efficiency at 93%. The removal percentage also increase with time giving the

optimum time recorded at 1440 minutes where the removal efficiency at constant rate it indicates that the equilibrium time at 1440 minutes

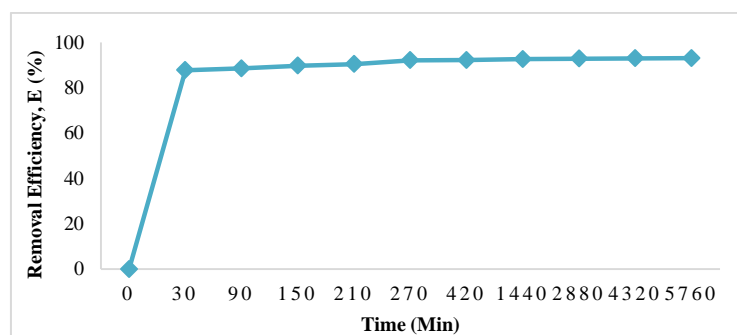


Figure 2. The effect of contact time on removal efficiency

**Adsorption kinetics**

The experimental data were applied to the pseudo-first order (PFO) and pseudo-second order (PSO) equations in order to evaluate the kinetics of the adsorptions of

synthetic dye onto SB and RH. The PFO and PSO equation is expressed in Table 3.

Table 3. Kinetic Models Equation Application

Kinetic models	Linear form
pseudo-first-order (PFO)	$\ln(q_e - q_t) = \ln(q_e) - k_1 t_i$
pseudo-second-order (PSO)	$\frac{t_i}{q_t} = \frac{1}{k_2 q_e^2} + \frac{t_i}{q_e}$

Linear plots of  $\ln(q_e - q_t)$  versus contact time,  $t_i$  (min) and  $t_i/q_t$  versus contact time,  $t_i$  (min) were plotted to understand the applicability of the intraparticle diffusion[15], PFO and PSO models for the dye adsorption onto two adsorbents. The values of C,  $k_1$ ,  $R^2$ , and all kinetics correlation coefficient values are defined from equations[16].

The linearity of the plots ( $R^2$ ) demonstrates that the intraparticle diffusion and PSO kinetic models play a significant role in the uptake of the dye by SB and RH. In addition, the experimental  $q_e$  values can be obtained from

the intercept of linear plots of PSO kinetics for adsorption of synthetic dyes onto SB and RH[7].

**Pseudo first order for sugarcane bagasse**

By using the PFO linear equation of  $\ln(q_e - q_t) = \ln(q_e) - k_1 t_i$ , it is possible to identify the important parameters presented in Figure 3. This equation can be expressed as:

$$\ln(q_e - q_t) = \ln(q_e) - k_1 t_i; \quad y = mx + c; \quad y = \ln(q_e - q_t); m = -k_1; x = t_i; c = \ln(q_e)$$

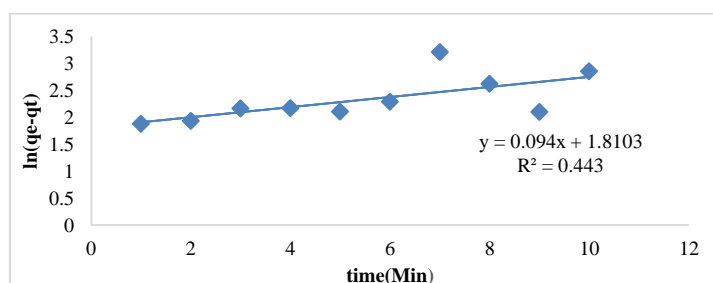


Figure 3. Pseudo First Order Figure of SB.

As shown in Figure 3, that the slope of plot  $\ln(q_e - q_t)$  versus  $t_i$  is 0.094. The y-intercept of the kinetic model is 1.8103 which is equivalent to  $\ln(q_e)$ . By solving the  $\ln$

$(q_e)$  through exponential solution, the value of  $q_e$  is 7.625 mg/g. The value of  $q_e$  is the PFO constant or the adsorption capacity of the system. The  $R^2$  determines the

correlation coefficient of the adsorption system to the kinetic model[7]. In this case, the R<sup>2</sup> value for SB is lower which is 0.443 obtained from the linear model, it is

indicate the PFO equation not really fitted for kinetic model for this analysis.

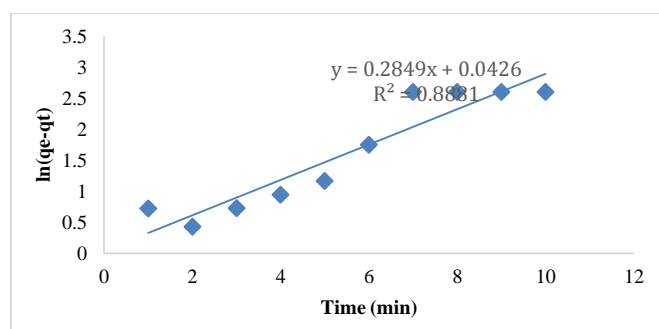
**Table 4.** Kinetic table of Pseudo First Order for SB

Solution	Amount (g)	q <sub>e</sub> (mg g <sup>-1</sup> )	k <sub>1</sub> (min <sup>-1</sup> )	R <sup>2</sup>	q <sub>e</sub> (exp) (mg g <sup>-1</sup> )
Synthetic solution for SB	2	15.15	4.064×10 <sup>-3</sup>	0.0966	15.15
	4	7.625	9.501×10 <sup>-3</sup>	0.443	7.625
	6	4.917	-0.13	0.2727	4.917

The Table 4 shows for batch experiments of PFO for variety amount of adsorbent. As can be seen, 4 g SB adsorbent have the highest value of correlation coefficient, R<sup>2</sup> which is 0.443 compared to other adsorbent mass. The analysis result is important to show the chemisorption mechanism due to the sharing electron between adsorbent-adsorbate into a chemical bond[17].

As shown in Figure 4, the slope of plot ln (q<sub>e</sub> - q<sub>t</sub>) versus t<sub>i</sub> is 0.2849. The y-intercept of the kinetic model for RH is 0.0426 which is equivalent to ln (q<sub>e</sub>). By solving the ln (q<sub>e</sub>) through exponential solution, the value of q<sub>e</sub> is 13.413 mg g<sup>-1</sup>. The value of q<sub>e</sub> is the PFO constant or the adsorption capacity of the system. The R<sup>2</sup> determines the correlation coefficient of the adsorption system to the kinetic model. The correlation coefficient, R<sup>2</sup>, for RH obtained from the linear model is 0.8881.

*Pseudo first order for rice husks*



**Figure 4.** Pseudo First Order Figure of RH

Data in Table 5 batch experiments of PFO for RH shows that 4 g of RH adsorbent have the highest value of correlation coefficient, R<sup>2</sup>, which is 0.8881 compared to the 2 g and 6 g of RH. The correlation coefficient, R<sup>2</sup>

indicate that PFO kinetic model is successfully fitted with the adsorption kinetic of synthetic dyes onto RH compared to SB due to higher value of R<sup>2</sup>.

**Table 5.** Kinetic table of Pseudo First Order for RH

Solution	Amount (g)	q <sub>e</sub> (mg g <sup>-1</sup> )	k <sub>1</sub> (min <sup>-1</sup> )	R <sup>2</sup>	q <sub>e</sub> (exp) (mg g <sup>-1</sup> )
Synthetic solution for RH	2	28.175	4.462×10 <sup>-4</sup>	0.2155	28.175
	4	13.413	0.13	0.8881	13.413
	6	7.233	0.076	0.2504	7.233

*Pseudo second order for sugarcane bagasse*

The assumption for PSO kinetic model is the reaction rate of adsorption solute dependent on the active sites on the adsorbent surface corresponding to adsorption of solution. The PSO kinetic model is important to

determine the adsorption capacity and initial solute uptake. Based on Figure 5, the slope is 0.0651 it is indicate the slope signifies the intensity of adsorption or heterogeneity of the adsorption [18].

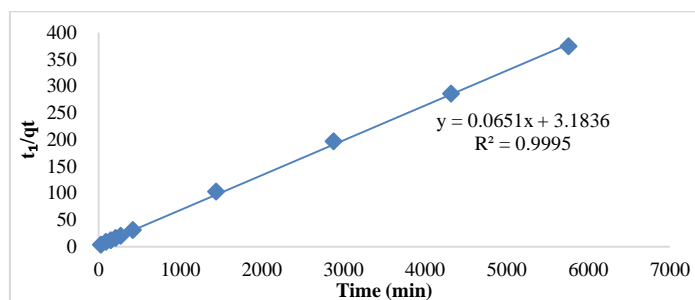


Figure 5. Pseudo Second Order Figure for SB

The y-intercept for the line is 3.1836 which is equivalent to  $\frac{1}{k_2 q_e^2}$ . The solving the y-intercept helps to identify the maximum adsorbent capacity,  $k_2 q_e^2$ , in which for this study which is 0.314 mg/g. By applying the value of  $k_2 q_e^2$  into the equation,  $k_2$  can be calculated and gave

$1.369 \times 10^{-3} \text{ (min}^{-1}\text{)}$ . In this study, the PSO model shows that the correlation coefficient,  $R^2$ , obtained is 0.9995. Based on the Table 6, the correlation coefficient,  $R^2$ , value near to 1 shows that the data has good fitting with PSO model.

Table 6. Kinetic Parameters PSO for the adsorption of synthetic dyes onto SB

Solution	Amount (g)	$q_e$ (mg/g)	$k_1$ (min <sup>-1</sup> )	$R^2$	$q_e$ (exp) (mg g <sup>-1</sup> )
Synthetic co/w SB	2	15.15	$1.369 \times 10^{-3}$	0.9995	15.15
	4	7.625	$2.033 \times 10^{-3}$	0.9985	7.625
	6	4.917	$8.152 \times 10^{-3}$	1	4.917

**Pseudo second order for rice husk**

The PSO kinetic model is important to determine the adsorption capacity and initial solute uptake. From Figure 6, the slope of PSO linear plot is 0.0354, it is

indicating the intensity of adsorption or heterogeneity of the adsorption.

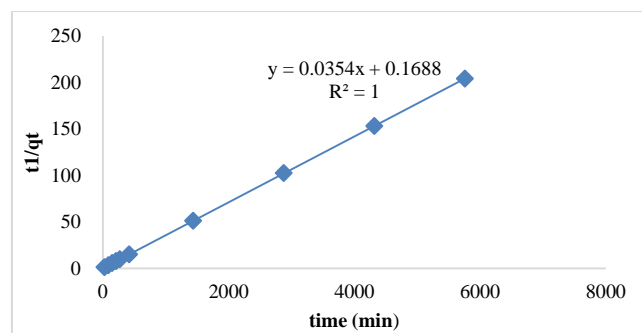


Figure 6. Pseudo Second Order Figure for RH

The y-intercept for the line is 0.1688 which is equivalent to  $\frac{1}{k_2 q_e^2}$ . Solving the y-intercept helps to identify the maximum adsorbent capacity,  $k_2 q_e^2$  for this study which is 5.924 mg g<sup>-1</sup>. By applying the value of  $k_2 q_e^2$  into the

equation in Table 3,  $k_2$  is  $7.463 \times 10^{-3} \text{ (min}^{-1}\text{)}$ . In this study, the  $R^2$  obtained is 1; it is indicating that PSO kinetic model is fitted with the adsorption kinetic of synthetic dyes onto RH compare to SB due the higher value of  $R^2$  with different adsorbent mass.

Table 7. Kinetic Parameters for the adsorption of synthetic dyes onto RH

Solution	Amount (g)	$q_e$ (mg/g)	$k_1$ (min <sup>-1</sup> )	$R^2$	$q_e$ (exp) (mg g <sup>-1</sup> )
Synthetic co/w RH	2	28.175	$7.463 \times 10^{-3}$	1	28.175
	4	13.413	$4.363 \times 10^{-3}$	1	13.413
	6	7.233	0.012	1	7.233

## CONCLUSIONS

The RH and SB adsorbent have been proved to have potential to be used in wastewater treatment. The two materials are low-cost material and environmentally friendly. The findings from batch experiments showed that the removal of RH is more efficient compared to SB removal. Analysis of kinetic showed that the PSO kinetic model is well fitted for adsorption kinetic of synthetic dyes onto RH compared to SB. Hence, the result of the kinetic model proved that the adsorbents have the potential to reduce the dye concentration from aqueous solution. This study may also provide an insight into the application of this kinetic model adsorption process in the future. Hence, this study contributes eco-friendly and low-cost in removing the dye pollutant from industrial wastewater for future assessment in a prospective wastewater treatment facility setting.

## ACKNOWLEDGEMENTS

This research was made possible by funding from Fundamental Research Grant Scheme (Vot. No.: FRGS/1/2020/TK0/UTHM/02/22) provided by the Ministry of Higher Education, Malaysia. The authors would also like to thanks the Centre for Diploma Studies (CeDS), University Tun Hussein Onn Malaysia and Universiti Tun Hussein Onn Malaysia for its support.

### *Conflict of interests*

No conflict.

## REFERENCE

1. Pearce C.I., Lloyd J.R., Guthrie J.T., 2003. The removal of colour from textile wastewater using whole bacterial cells: a review. *Dyes and Pigments*. 58, 179–196.
2. Titchou F.E., Akbour R.A., Assabbane A., Hamdani M., 2020. Removal of cationic dye from aqueous solution using Moroccan pozzolana as adsorbent: Isotherms, kinetic studies, and application on real textile wastewater treatment. *Groundwater for Sustainable Development*. 11, 100405.
3. Çelekli A., Al-Nuaimi A. I., Bozkurt H., 2019. Adsorption kinetic and isotherms of Reactive Red 120 on *Moringa oleifera* seed as an eco-friendly process. *Journal of Molecular Structure*. 1195, 168–178.
4. Prescott L.M., Harley J.P., Klein D.A., 2002. *Microbiology: Food and Industrial Microbiology*. 5th Edition, McGraw-Hill, Boston, 978-981.
5. El Haddad M., 2016. Removal of Basic Fuchsin dye from water using mussel shell biomass waste as an adsorbent: Equilibrium, kinetics, and thermodynamics. *Journal of Taibah University for Science*. 10(5), 664–674.
6. Mall I.D., Srivastava V.C., Agarwal N. K., 2006. Removal of Orange-G and Methyl Violet dyes by adsorption onto bagasse fly ash - Kinetic study and equilibrium isotherm analyses. *Dyes and Pigments*. 69(3), 210–223.
7. Huang W., Chen J., He F., Tang J., Li D., Zhu Y., Zhang Y., 2014. Applied Clay Science Effective phosphate adsorption by Zr / Al-pillared montmorillonite: insight into equilibrium, kinetics and thermodynamics. *Applied Clay Science*. 104, 252–260.
8. Worch E., 2012. Adsorption technology in water treatment: Fundamentals, processes, and modeling. In *Walter de Gruyter*.
9. Ye H., Chen F., Sheng Y., Sheng G., Fu J., 2006. Adsorption of phosphate from aqueous solution onto modified palygorskites. *Separation and Purification Technology*. 50(3), 283–290.
10. Liang S., Guo X., Feng N., Tian Q., 2010. Isotherms, kinetics and thermodynamic studies of adsorption of Cu<sup>2+</sup> from aqueous solutions by Mg<sup>2+</sup>/K<sup>+</sup> type orange peel adsorbents. *Journal of Hazardous Materials*. 174(1–3), 756–762.
11. Zhu W.L., Cui L.H., Ouyang Y., Long C.F., Tang X.D., 2011. Kinetic Adsorption of Ammonium Nitrogen by Substrate Materials for Constructed Wetlands. *Pedosphere*. 21(4), 454–463.
12. Abdul Salim N.A., Abdullah N.H., Khairuddin M.R., Rudie Arman M.A.Z., Khamidun M.H., Fulazzaky M.A., Puteh M.H., 2018. Adsorption of phosphate from

aqueous solutions using waste mussel shell. MATEC Web of Conferences. 250, 06013.

13. Ruíz-Baltazar Á., 2020. Kinetic adsorption models of silver nanoparticles biosynthesized by *Cnicus Benedictus*: Study of the photocatalytic degradation of methylene blue and antibacterial activity. *Inorganic Chemistry Communications*. 120, 108158.

14. Jung J., Yoon J.H., Chung H.H., Lee M.J., 2002. Radiation treatment of secondary effluent from a sewage treatment plant. *Radiation Physics and Chemistry*. 65(4–5), 533–537.

15. Vieillard J., Bouazizi N., Bargougui R., Fotsing P.N., Thoumire O., Ladam G., Azzouz A., 2019. Metal-inorganic-organic core-shell material as efficient matrices for CO<sub>2</sub> adsorption: Synthesis, properties and

kinetic studies. *Journal of the Taiwan Institute of Chemical Engineers*. 95, 452–465.

16. Çelekli A., Al-Nuaimi A.I., Bozkurt H., 2019. Adsorption kinetic and isotherms of Reactive Red 120 on *Moringa oleifera* seed as an eco-friendly process. *Journal of Molecular Structure*. 1195, 168–178.

17. Chen W.T., Lin C.W., Shih P.K., Chang W.L., 2012. Adsorption of phosphate into waste oyster shell: Thermodynamic parameters and reaction kinetics. *Desalination and Water Treatment*. 47(1–3), 86–95.

18. Ali M., Atikah N., Salim A., Hudai N., Rahim A., Yusoff M., Paul E., 2014. Precipitation of iron-hydroxy-phosphate of added ferric iron from domestic wastewater by an alternating aerobic – anoxic process. *Chemical Engineering Journal*. 253, 291–297.